



ROYAL TEXAN HOMES LLC



THE SIGNATURE COLLECTION

By Royal Texan Homes

18357 Woodstream Crossing Rd.,
Montgomery, TX 77316

AVAILABLE JANUARY 2027

At over 4,700 square feet, this Signature Home—drawn from our Hamilton floorplan—is designed around balance: where defined architecture, material continuity, and thoughtful zoning come together to support both everyday living and meaningful gathering. Positioned on a wide homesite in Lake Creek Ranch Estates, the home is composed to sit with presence while maintaining privacy and usable outdoor space.

A LOOK INSIDE:

- Inspired by the Hamilton floorplan, refined for clarity, proportion, and flow.
- Four-bedroom layout with en-suite baths, offering comfort and independence for each space.
- Central living, dining, and kitchen sequence anchored by direct connection to the rear porch.
- Hidden pantry positioned between the scullery kitchen and coffee bar to support preparation while maintaining a clean primary kitchen.
- Dedicated coffee bar with integrated storage and display elements.
- Private owner's suite with dual closets, integrated bath, and direct connection to utility spaces.
- Flexible front study and secondary flex room positioned to adapt to changing needs.
- Integrated outdoor kitchen with dedicated grilling, prep, and gathering space positioned to support year-round hosting.

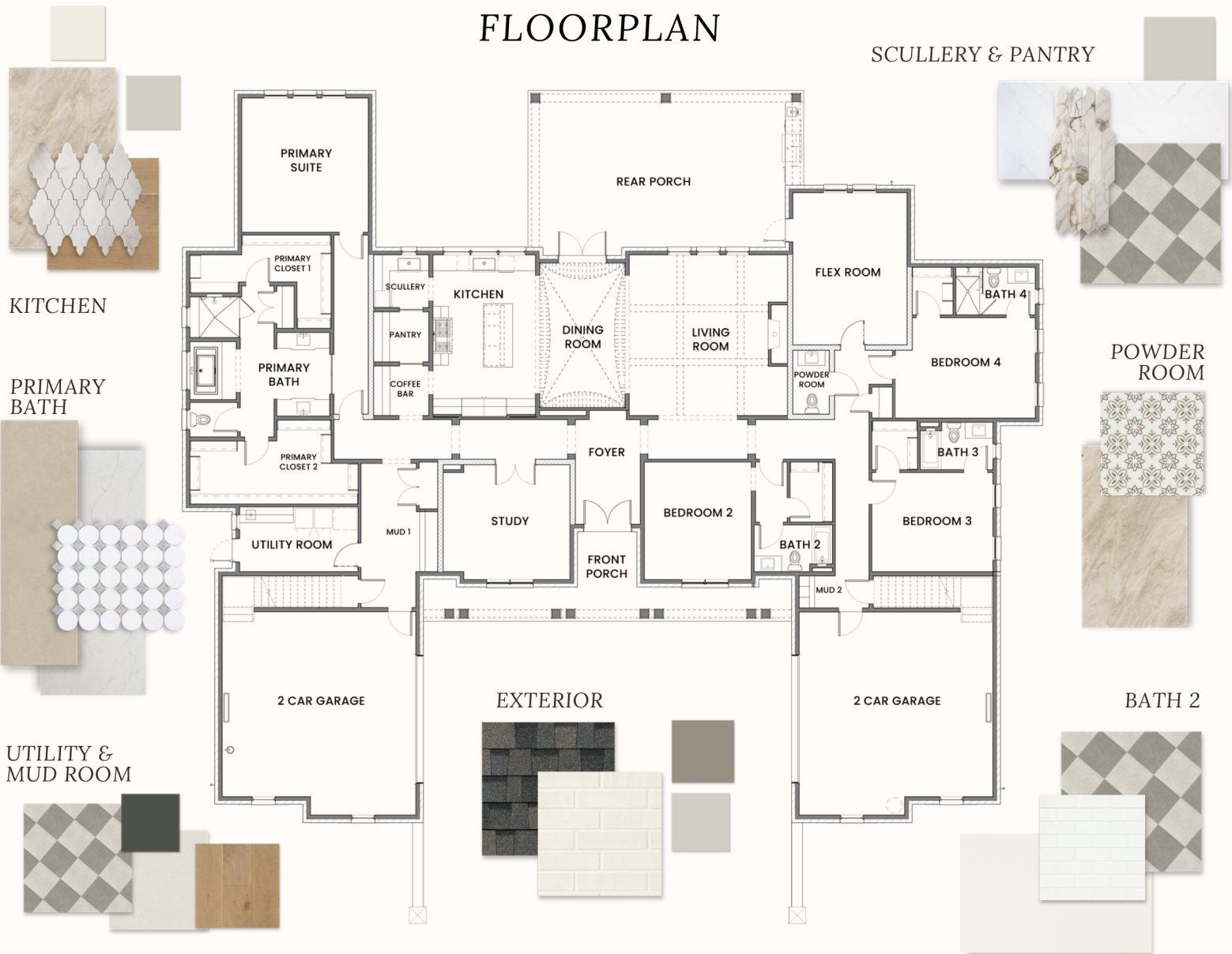
2025 GHBA CUSTOM BUILDER OF THE YEAR



WWW.ROYALTEXAN.COM | 936-271-4425 | SALES@ROYALTEXAN.COM

FLOORPLAN

SCULLERY & PANTRY



4,772 SQFT | 4 BED | 4.5 BATHS | 2 DOUBLE CAR GARAGE | 1.5 ACRE LOT

ARCHITECTURAL EXPERIENCE

- Main living spaces aligned for openness and visual continuity throughout the home.
- Public and private zones separated to support privacy and retreat.
- Defined galleries create circulation without unnecessary overlap.
- Kitchen, dining, and living spaces aligned for openness while maintaining distinction.
- Scullery, pantry, mud rooms, and utility spaces are positioned behind the primary living areas.
- Rear porch designed as an extension of the living space, supporting indoor-outdoor continuity.

MATERIAL & DESIGN DIRECTION

- Custom white oak cabinetry carried across key spaces.
- Taj Mahal quartzite surfaces anchoring the kitchen and primary areas.
- Calacatta stone selections layered throughout baths and secondary spaces.
- Basketweave marble, checkered layouts, and vertical picket tile moments across baths and utility spaces.
- Full-height tile applications and continuous surfaces for clean, uninterrupted planes.
- Inset cabinetry with detailed toe kicks and refined millwork throughout.