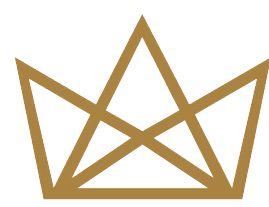


ROYAL TEXAN HOMES LLC

THE WESTMINSTER

TOTAL LIVING 4,536 S.F.

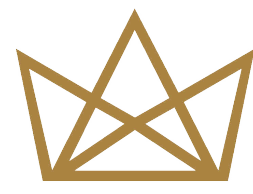
TOTAL NON-LIVING 1,156 S.F.



ROYAL TEXAN HOMES LLC

THE WESTMINSTER OPTION ONE

TOTAL LIVING 4,536 S.F.
TOTAL NON-LIVING 1,323 S.F.

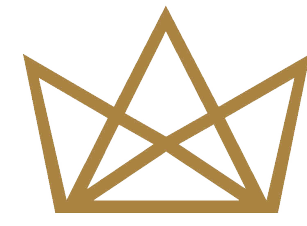


ROYAL TEXAN HOMES LLC

THE WESTMINSTER OPTION TWO

TOTAL LIVING 4,624 S.F.

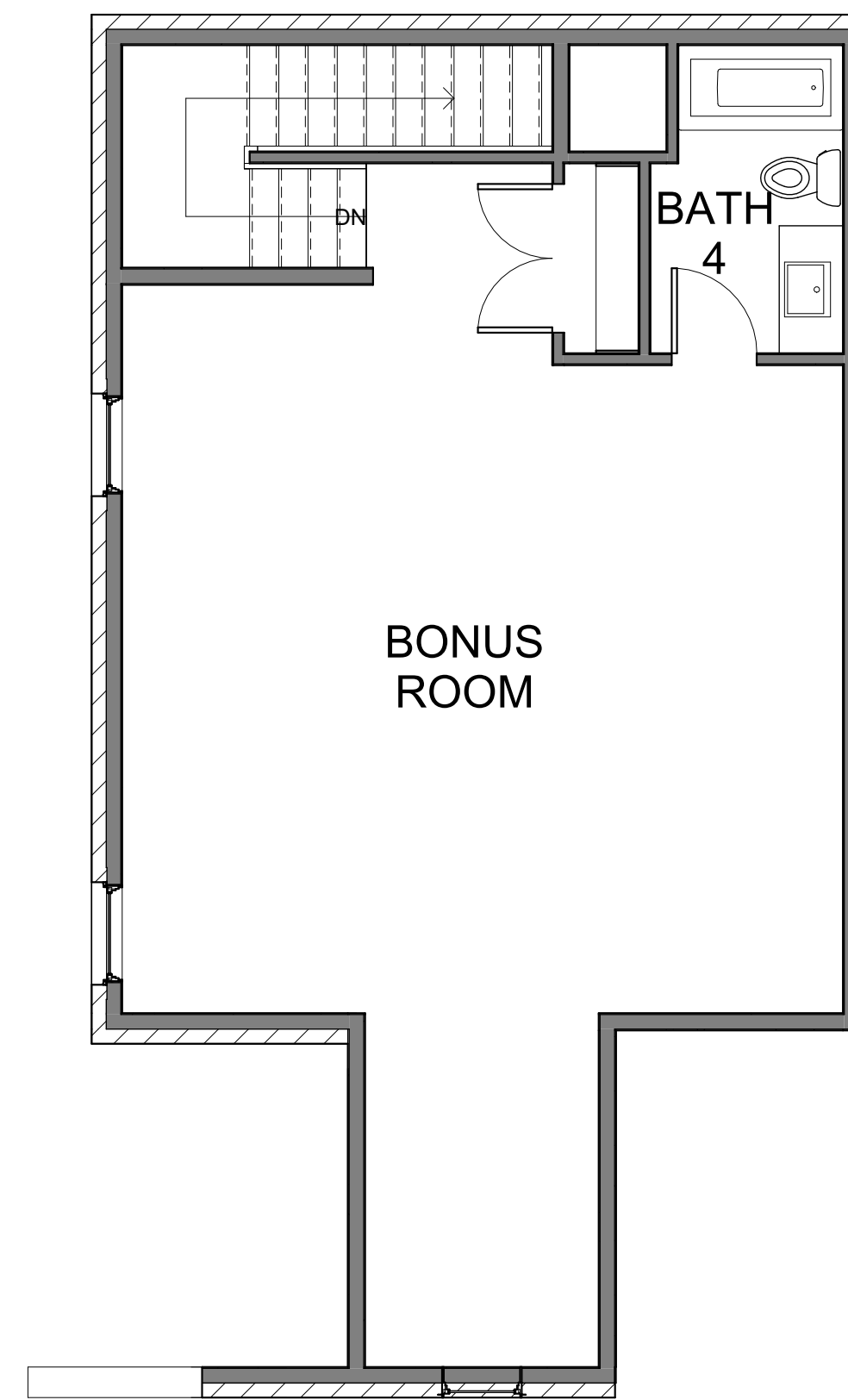
TOTAL NON-LIVING 1,460 S.F.

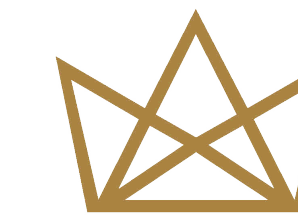


ROYAL TEXAN HOMES LLC

THE WESTMINSTER OPTION THREE

TOTAL LIVING 5,267 S.F.
TOTAL NON-LIVING 1,156 S.F.



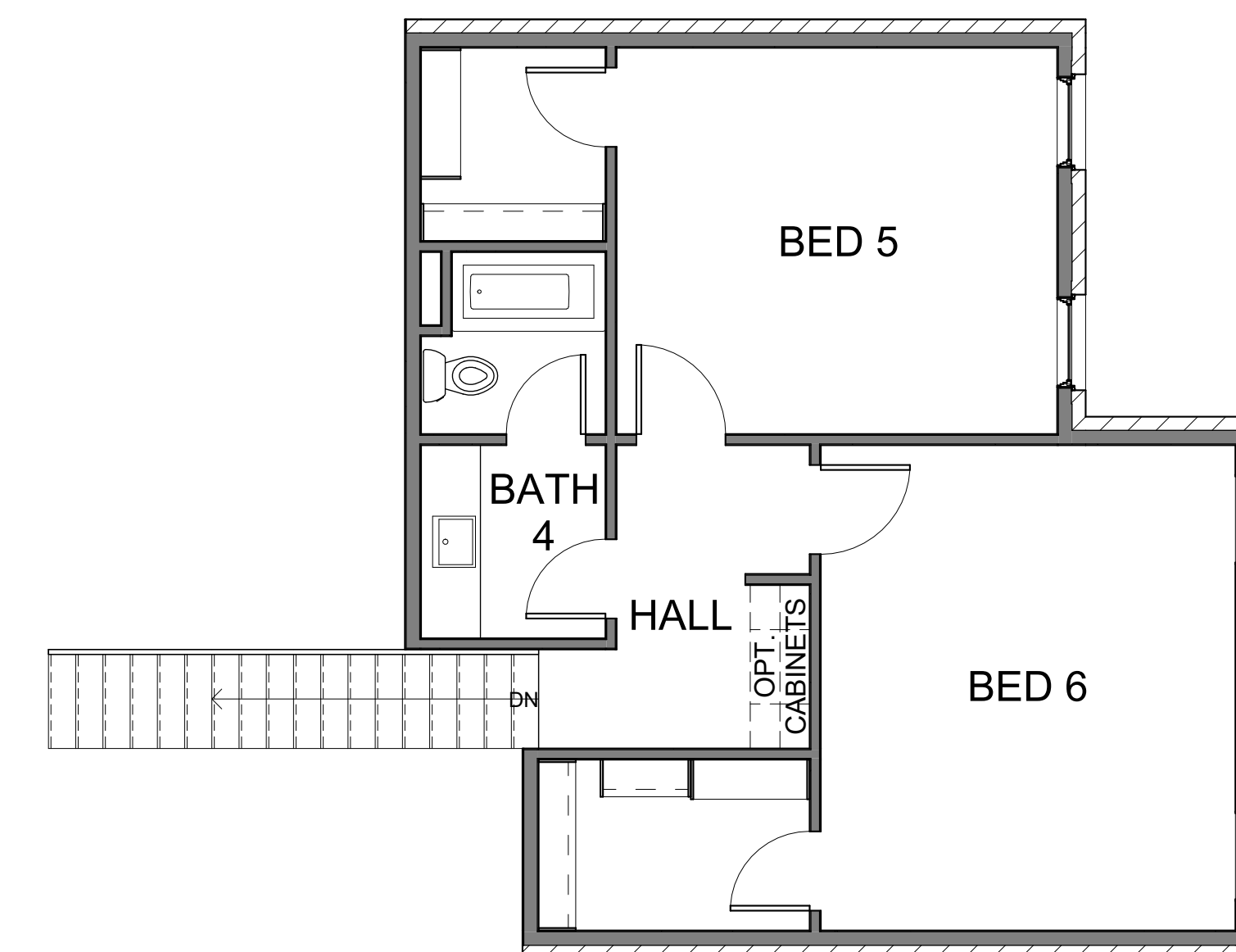


ROYAL TEXAN HOMES LLC

THE WESTMINSTER OPTION FOUR

TOTAL LIVING 5,287 S.F.

TOTAL NON-LIVING 1,156 S.F.



2ND FLOOR +751 S.F.