

SQUARE FOOTAGES

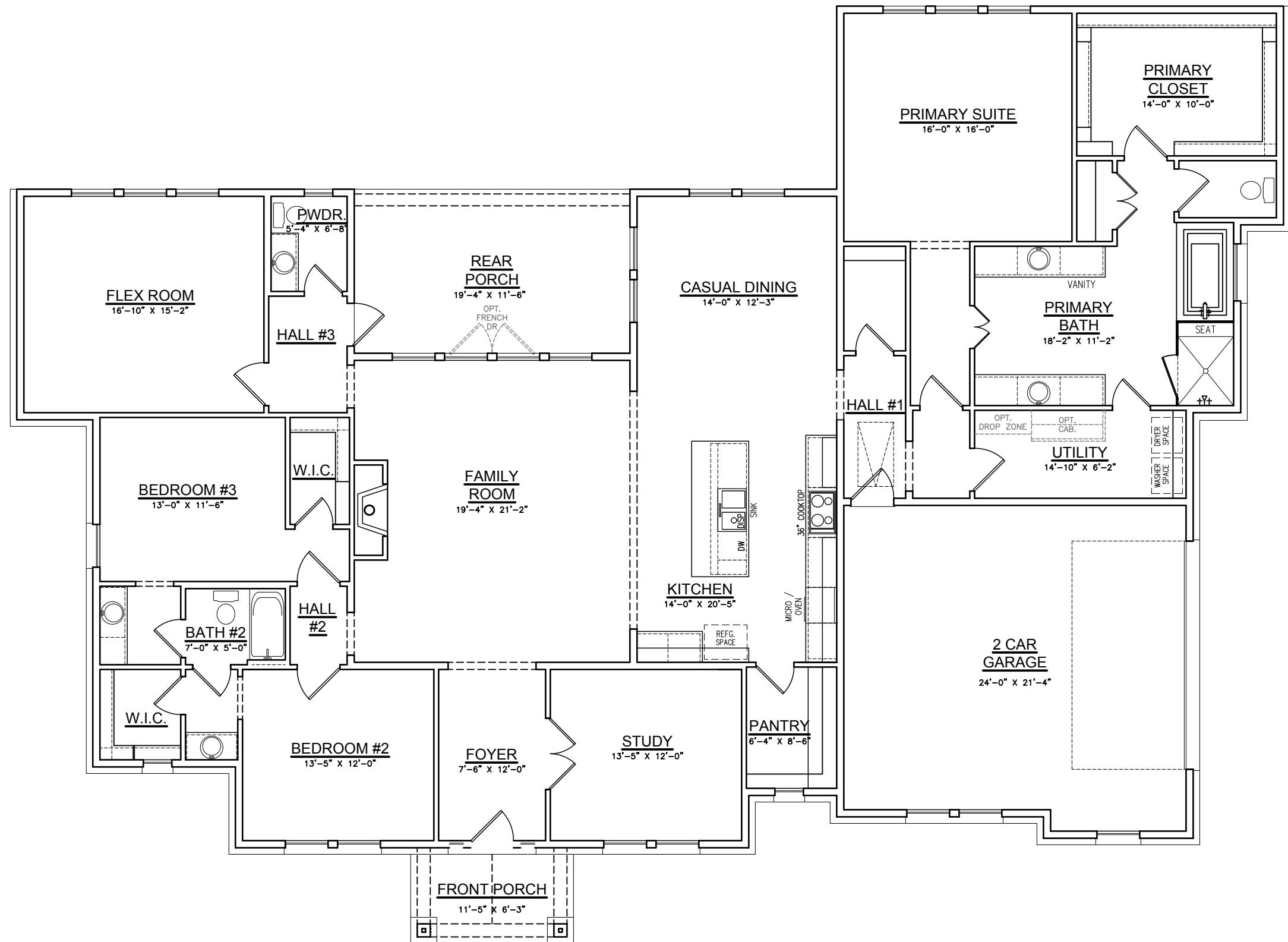
	SQ. FT.
TOTAL LIVING	3219

FRONT PORCH	71
REAR PORCH	222
2-CAR GARAGE	552
TOTAL NON-LIVING	821
(overage non-living)	16

TOTAL FRAME	4040
-------------	------

TOTAL SLAB	4040
W/BRICK LEDGE	

Width of Home	89'-9"
Depth of Home	65'-8"



Abbott Craftsman Base Plan

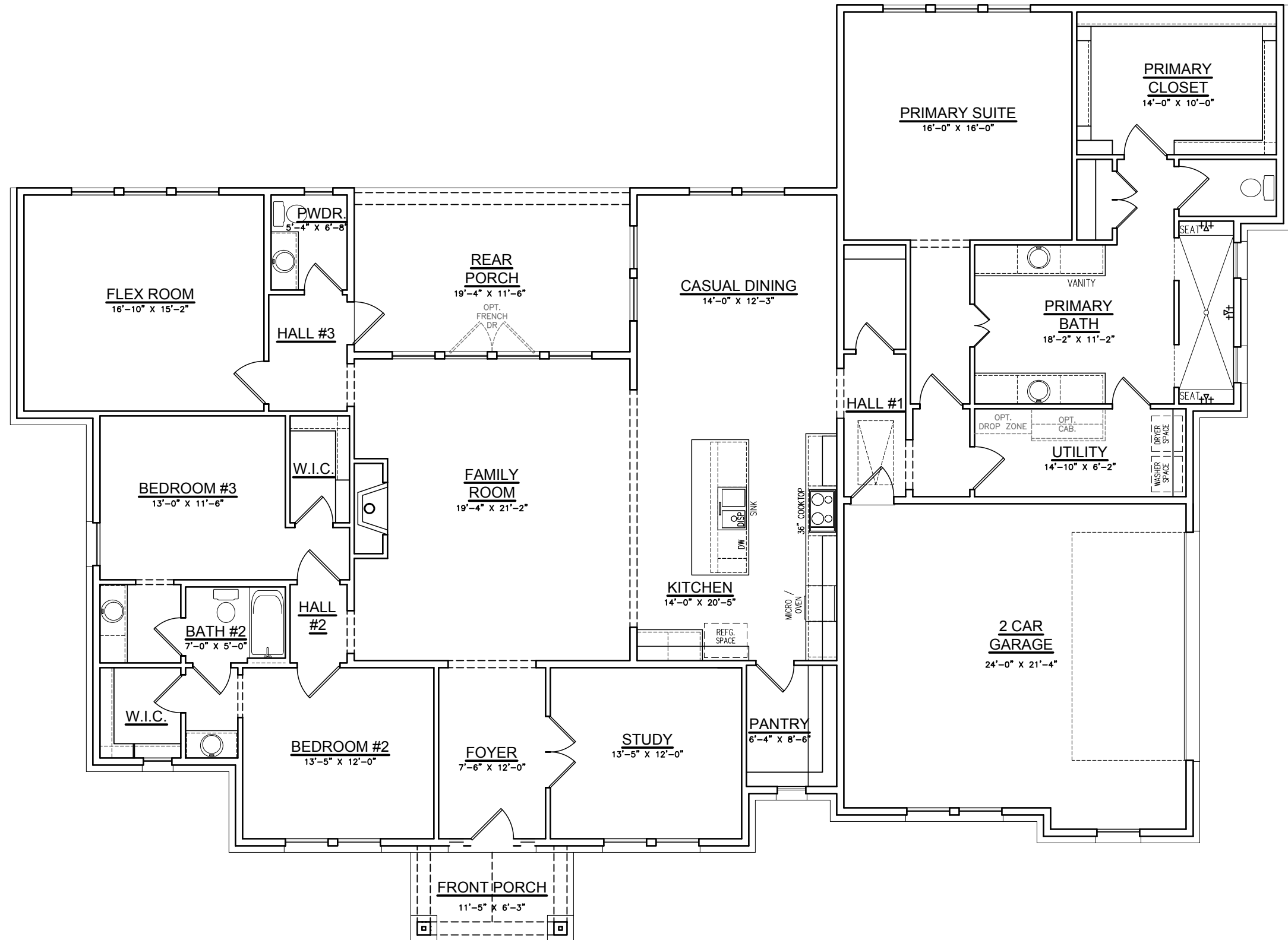
SQUARE FOOTAGES	
	SQ. FT.
TOTAL LIVING	3219

FRONT PORCH	71
REAR PORCH	222
2-CAR GARAGE	552
TOTAL NON-LIVING	845
(overage non-living)	40

TOTAL FRAME	4064
-------------	------

TOTAL SLAB	4157
W/BRICK LEDGE	

Width of Home	89'-9"
Depth of Home	65'-8"



Option #1 Abbott Craftsman with
Primary Suite Opt. No Primary Bath Tub



SQUARE FOOTAGES

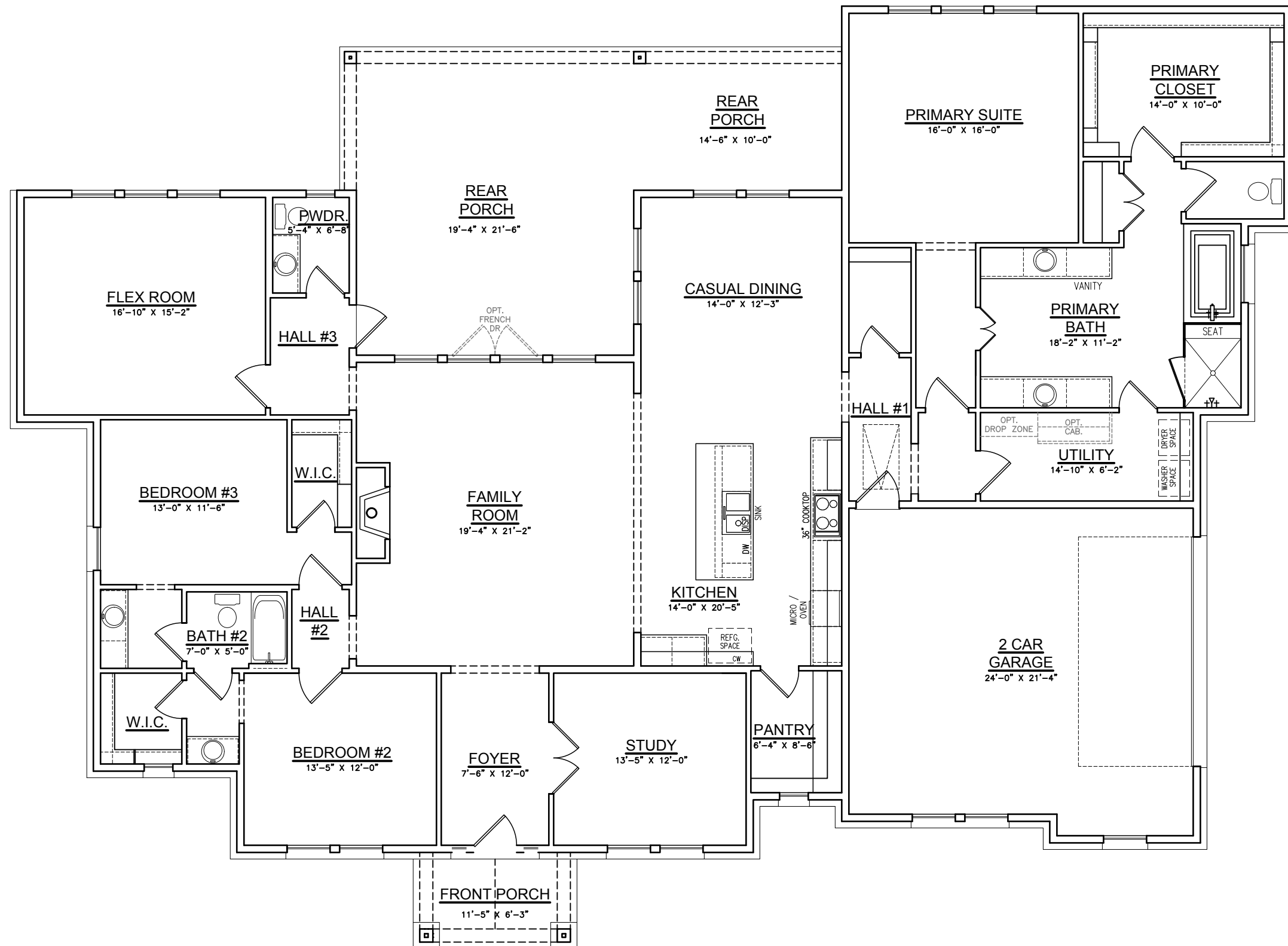
	SQ. FT.
TOTAL LIVING	3219

FRONT PORCH	71
REAR PORCH	572
2-CAR GARAGE	552
TOTAL NON-LIVING	1195
(overage non-living)	390

TOTAL FRAME	4414
-------------	------

TOTAL SLAB	4507
W/BRICK LEDGE	

Width of Home	89'-9"
Depth of Home	65'-8"



Option #2 Abbott Craftsman with
Extended R. Porch



SQUARE FOOTAGES

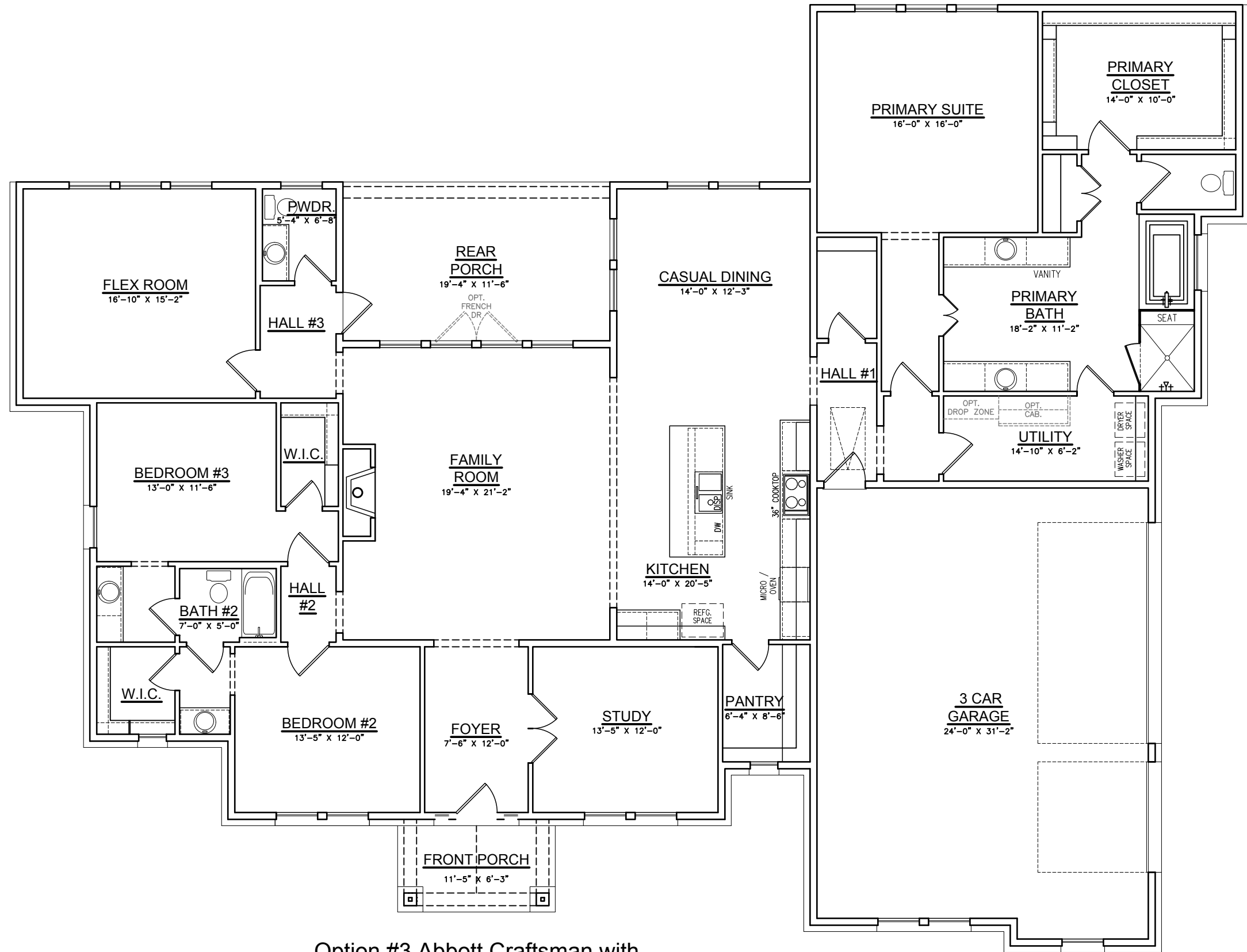
	SQ. FT.
TOTAL LIVING	3219

FRONT PORCH	71
REAR PORCH	222
3-CAR GARAGE	797
TOTAL NON-LIVING	1090
(overage non-living)	285

TOTAL FRAME	4309
-------------	------

TOTAL SLAB	4411
W/BRICK LEDGE	

Width of Home	89'-9"
Depth of Home	68'-7"



Option #3 Abbott Craftsman with
Garage Opt. 3-Car Garage



SQUARE FOOTAGES

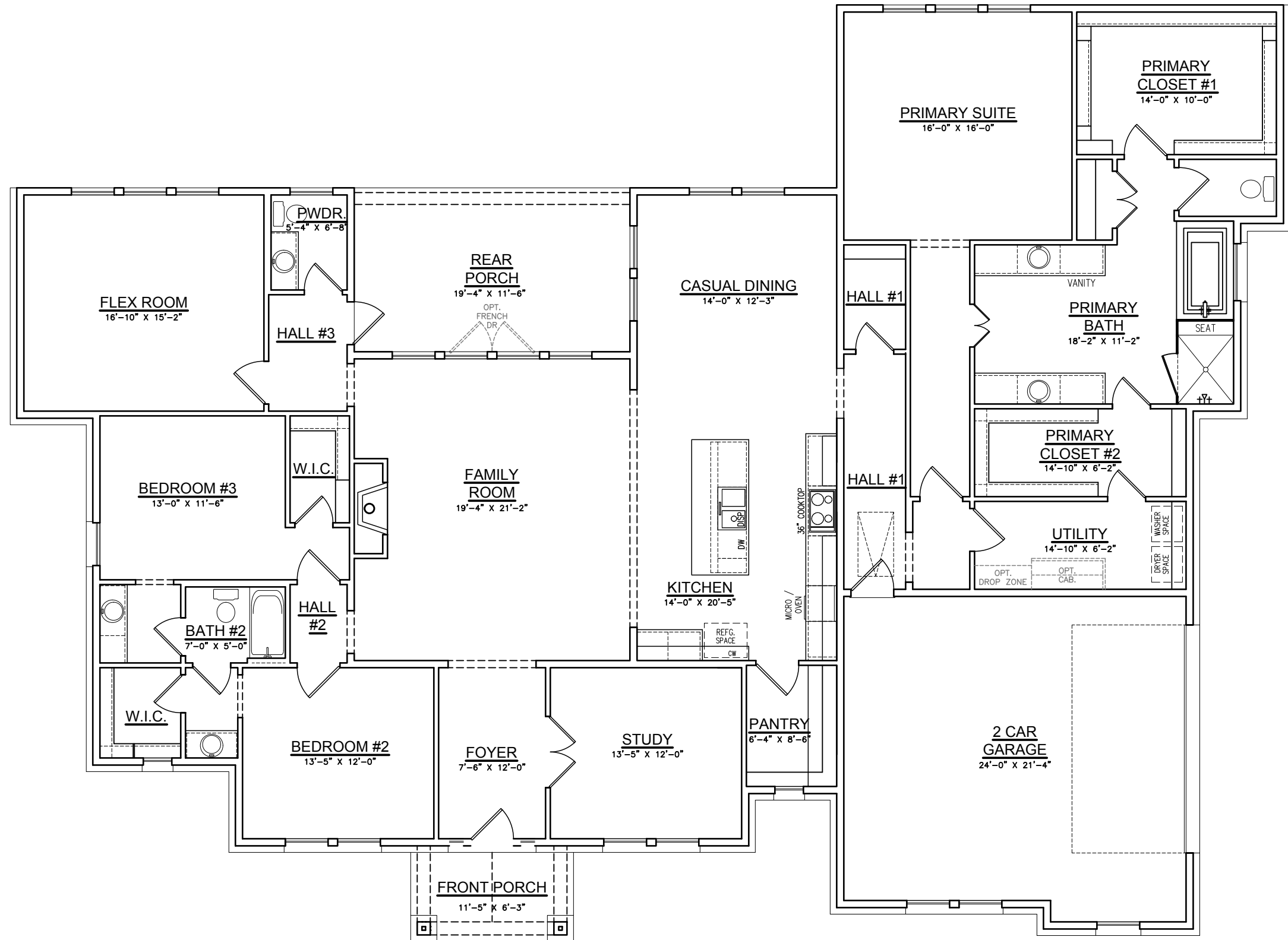
	SQ. FT.
TOTAL LIVING	3379

FRONT PORCH	71
REAR PORCH	222
2-CAR GARAGE	555
TOTAL NON-LIVING	848
(average non-living)	3

TOTAL FRAME	4227
-------------	------

TOTAL SLAB	4330
W/BRICK LEDGE	

Width of Home	89'-9"
Depth of Home	65'-8"



**Option #4 Abbott Craftsman with
Primary Suite Opt. Two Primary Closets**



SQUARE FOOTAGES

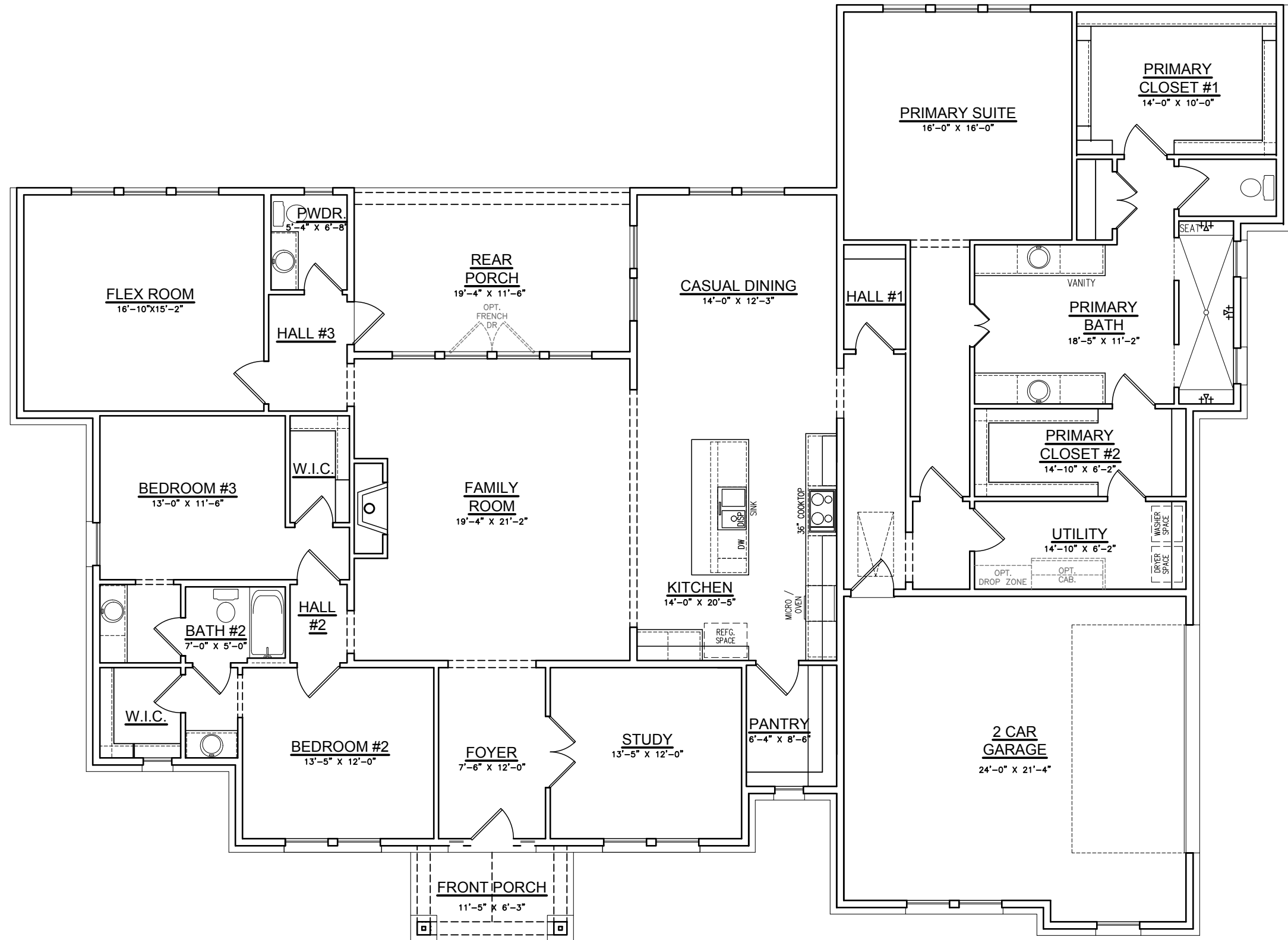
	SQ. FT.
TOTAL LIVING	3379

FRONT PORCH	71
REAR PORCH	222
2-CAR GARAGE	555
TOTAL NON-LIVING	848
(average non-living)	3

TOTAL FRAME	4227
-------------	------

TOTAL SLAB	4326
W/BRICK LEDGE	

Width of Home	89'-9"
Depth of Home	65'-8"



Option #5 Abbott Craftsman with
Primary Suite Opt. Two Primary Closets
W/ No Primary Bath Tub



SQUARE FOOTAGES

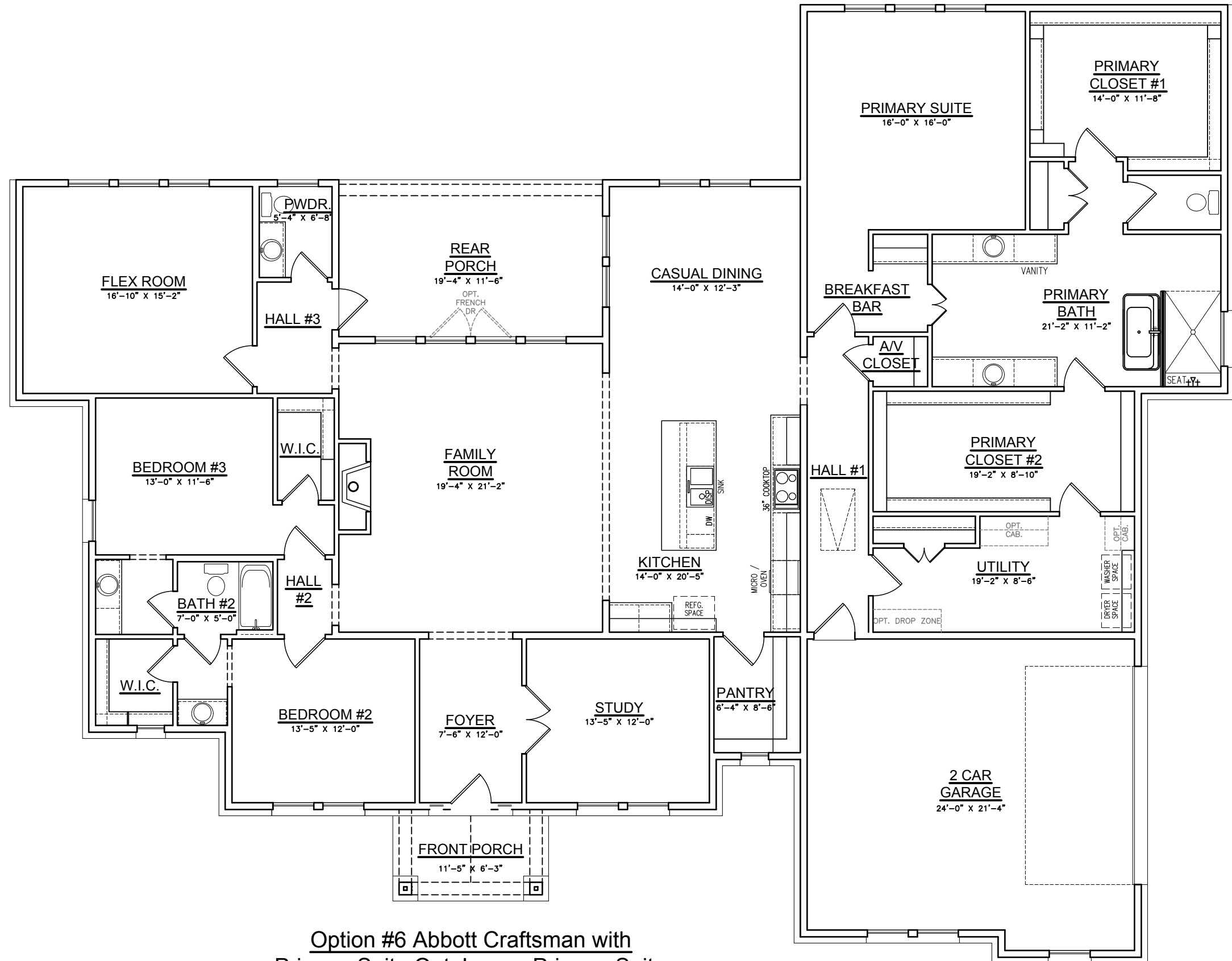
	SQ. FT.
TOTAL LIVING	3540

FRONT PORCH	71
REAR PORCH	222
2-CAR GARAGE	557
TOTAL NON-LIVING	784
(overage non-living)	0

TOTAL FRAME	4390
-------------	------

TOTAL SLAB	4493
W/BRICK LEDGE	

Width of Home	89'-9"
Depth of Home	70'-3"



Option #6 Abbott Craftsman with
Primary Suite Opt. Larger Primary Suite



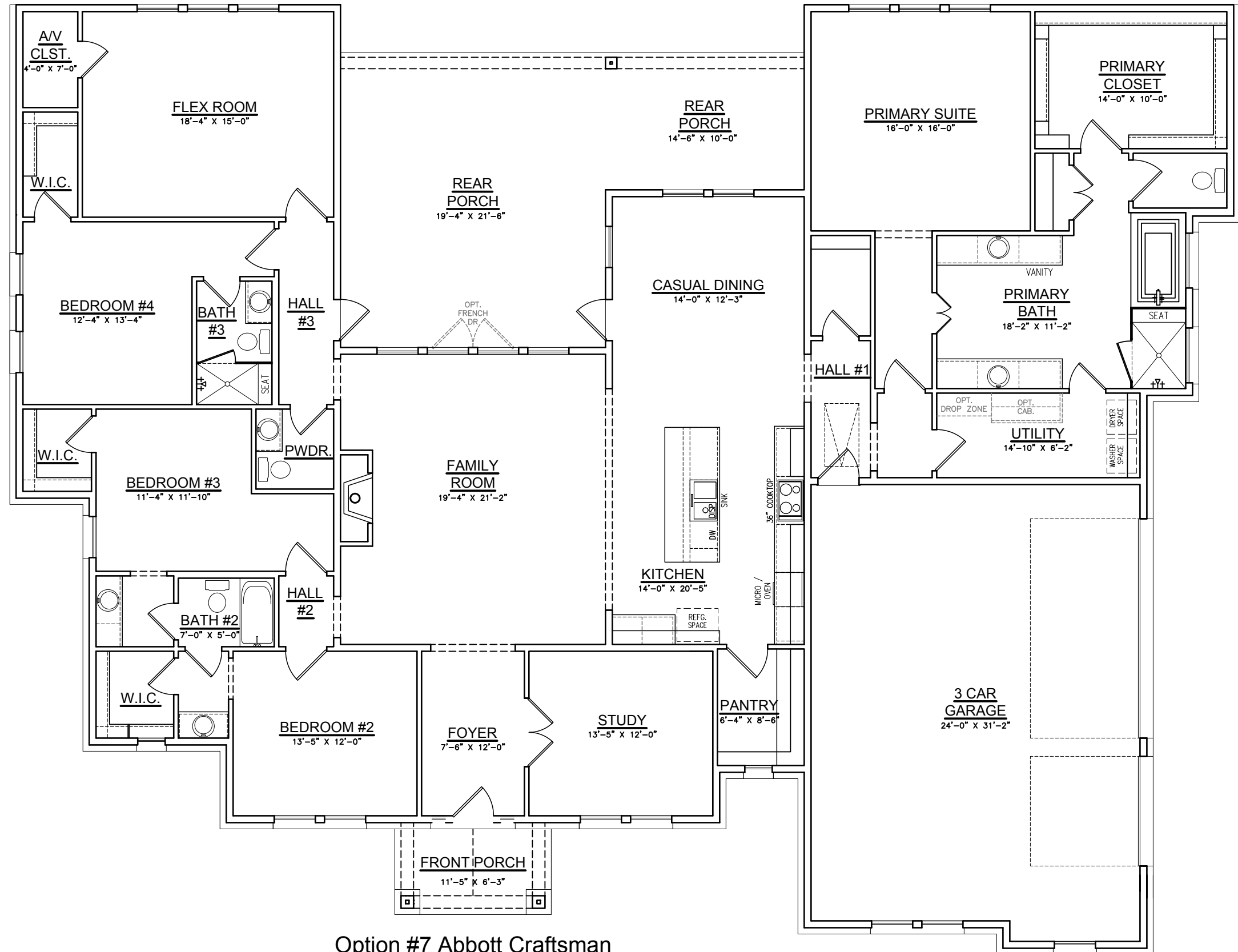
SQUARE FOOTAGES	
	SQ. FT.
TOTAL LIVING	3573

FRONT PORCH	71
REAR PORCH	561
3-CAR GARAGE	814
TOTAL NON-LIVING	1446
(average non-living)	553

TOTAL FRAME	5019
-------------	------

TOTAL SLAB	5127
W/BRICK LEDGE	

Width of Home	89'-9"
Depth of Home	69'-3"



**Option #7 Abbott Craftsman
with 4th Bedroom, Extended R. Porch
and 3-Car Garage**



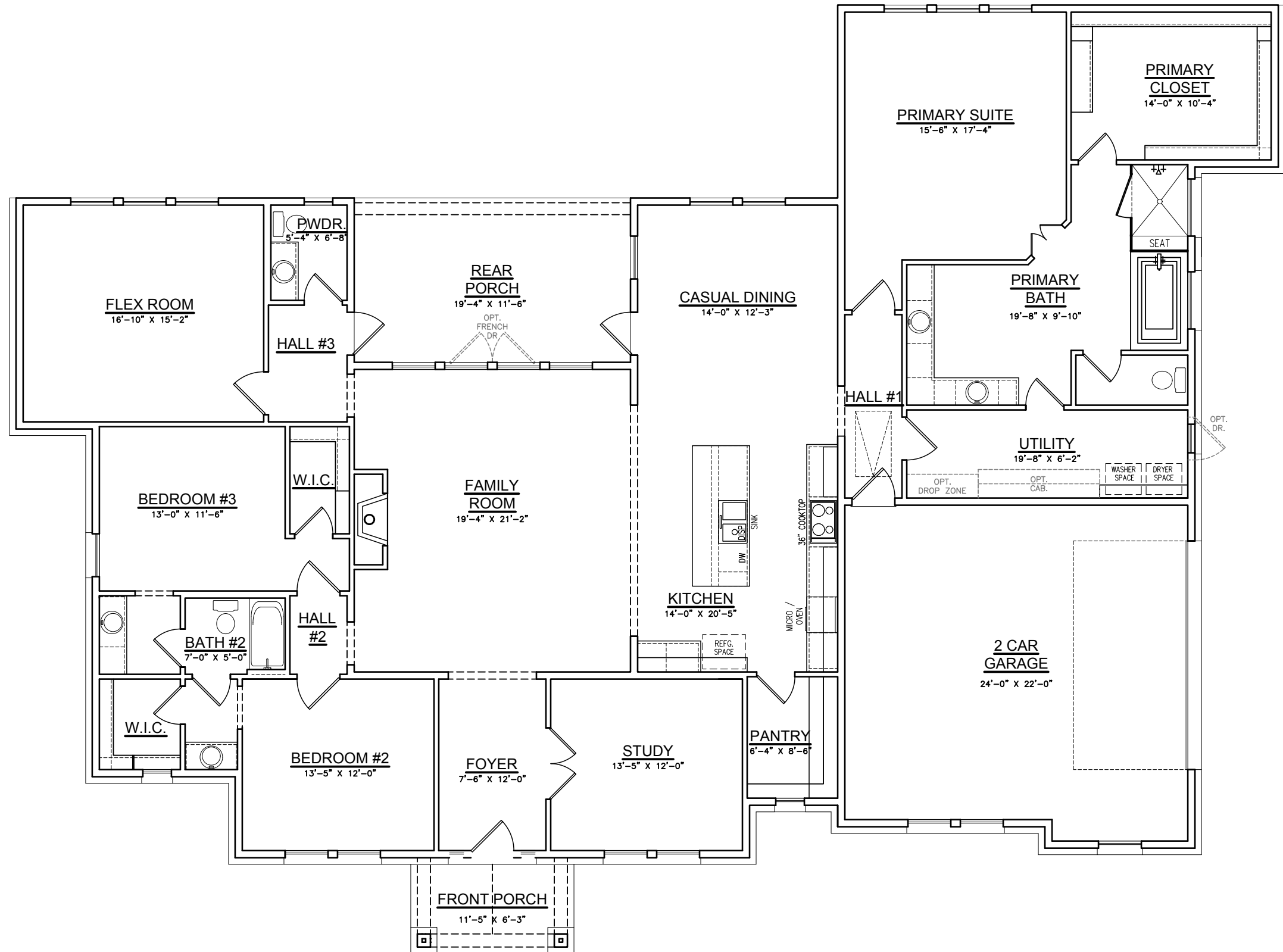
SQUARE FOOTAGES	
	SQ. FT.
TOTAL LIVING	3145

FRONT PORCH	71
REAR PORCH	222
2-CAR GARAGE	568
TOTAL NON-LIVING	861
(overage non-living)	75

TOTAL FRAME	4006
-------------	------

TOTAL SLAB	4098
W/BRICK LEDGE	

Width of Home	89'-3"
Depth of Home	66'-4"



**Option #8 Abbott Craftsman
with Traditional Primary Bath**