

# SQUARE FOOTAGES

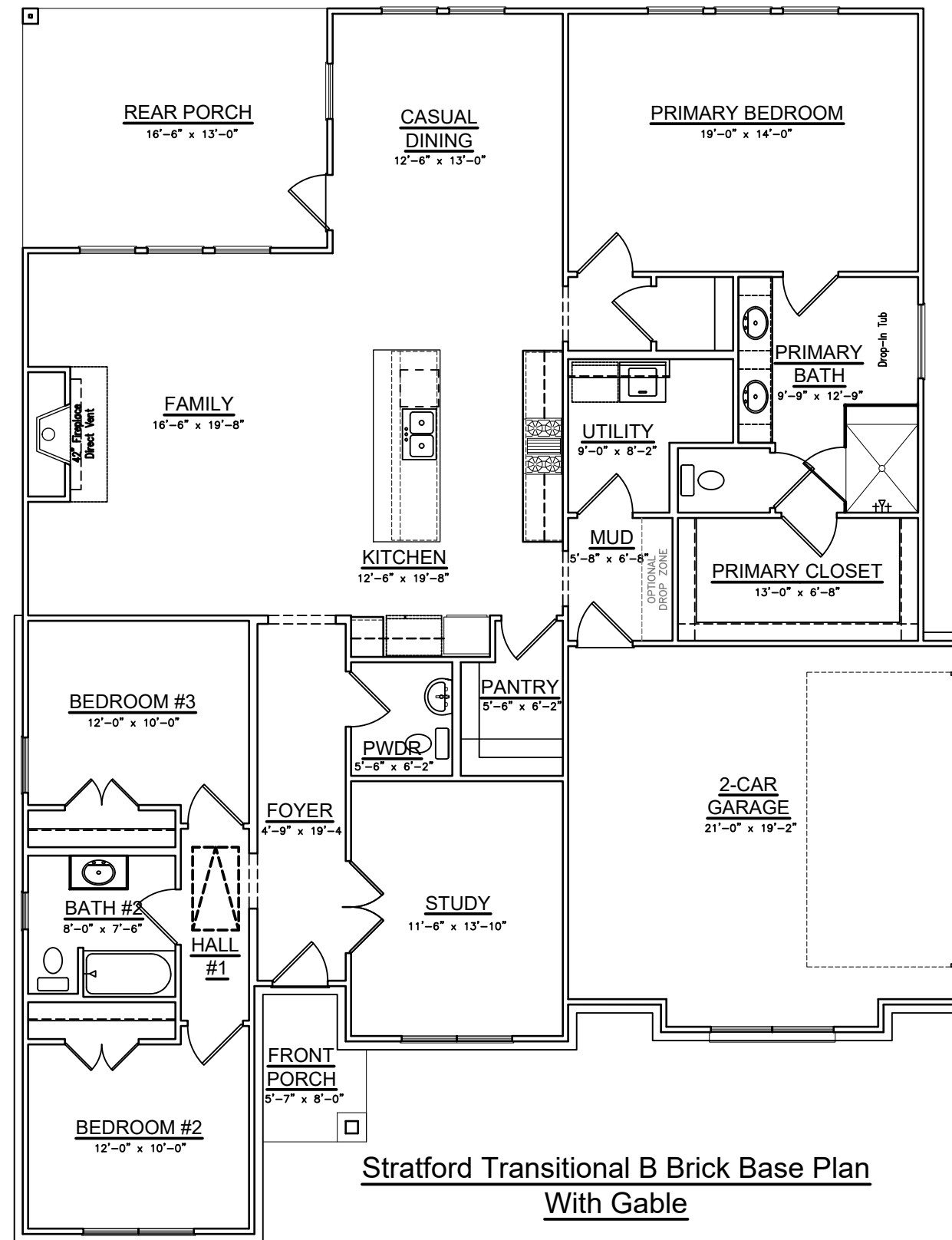
	SQ. FT.
TOTAL LIVING	2231

FRONT PORCH	40
REAR PORCH	215
2-CAR GARAGE	433
TOTAL NON-LIVING	688
(overage non-lining)	130

TOTAL FRAME	2919
-------------	------

TOTAL SLAB	2978
(w/ Brick Ledge)	

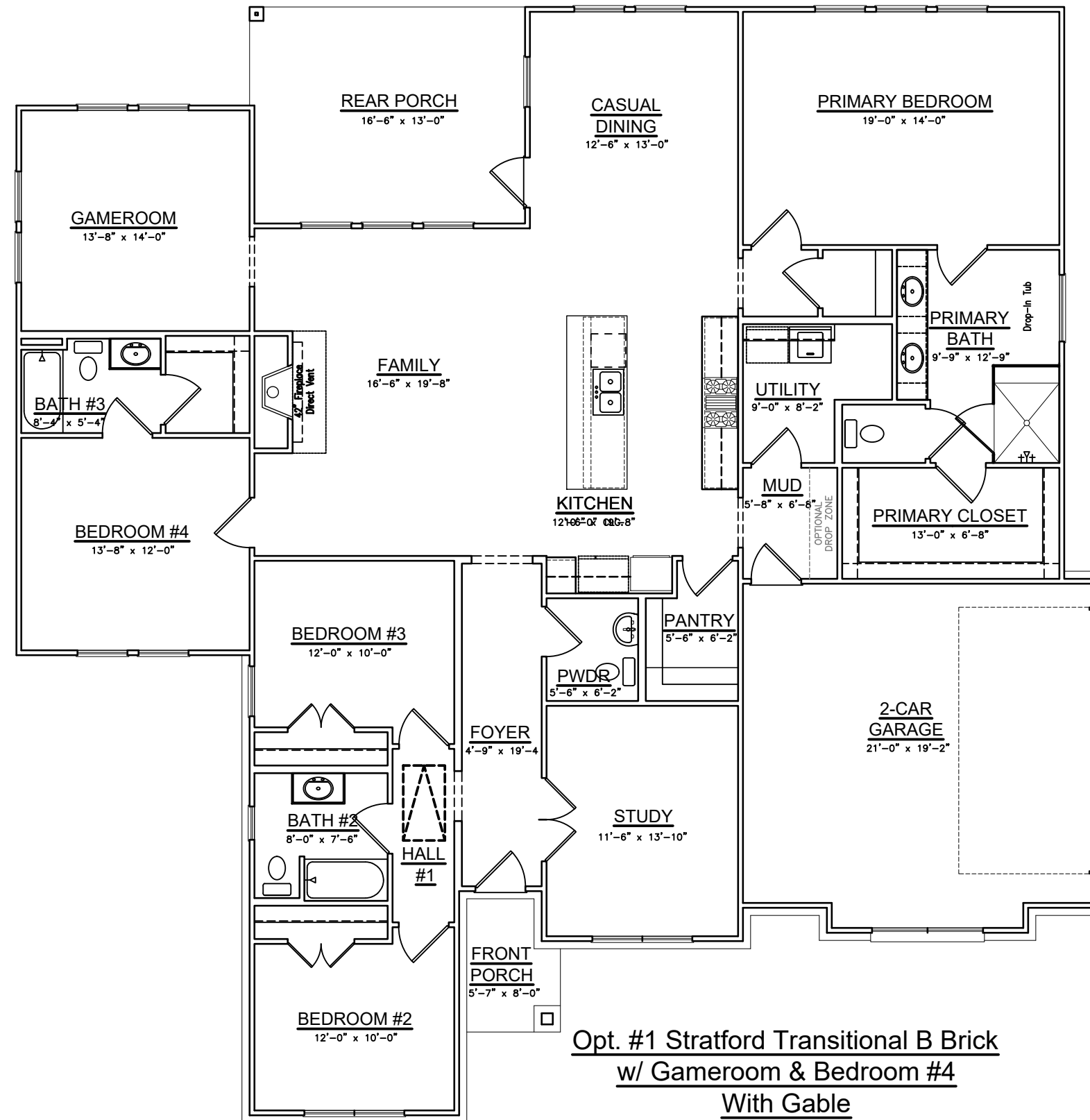
Width of Home	51'-10"
Depth of Home	67'-0"



**Stratford Transitional B Brick Base Plan  
With Gable**

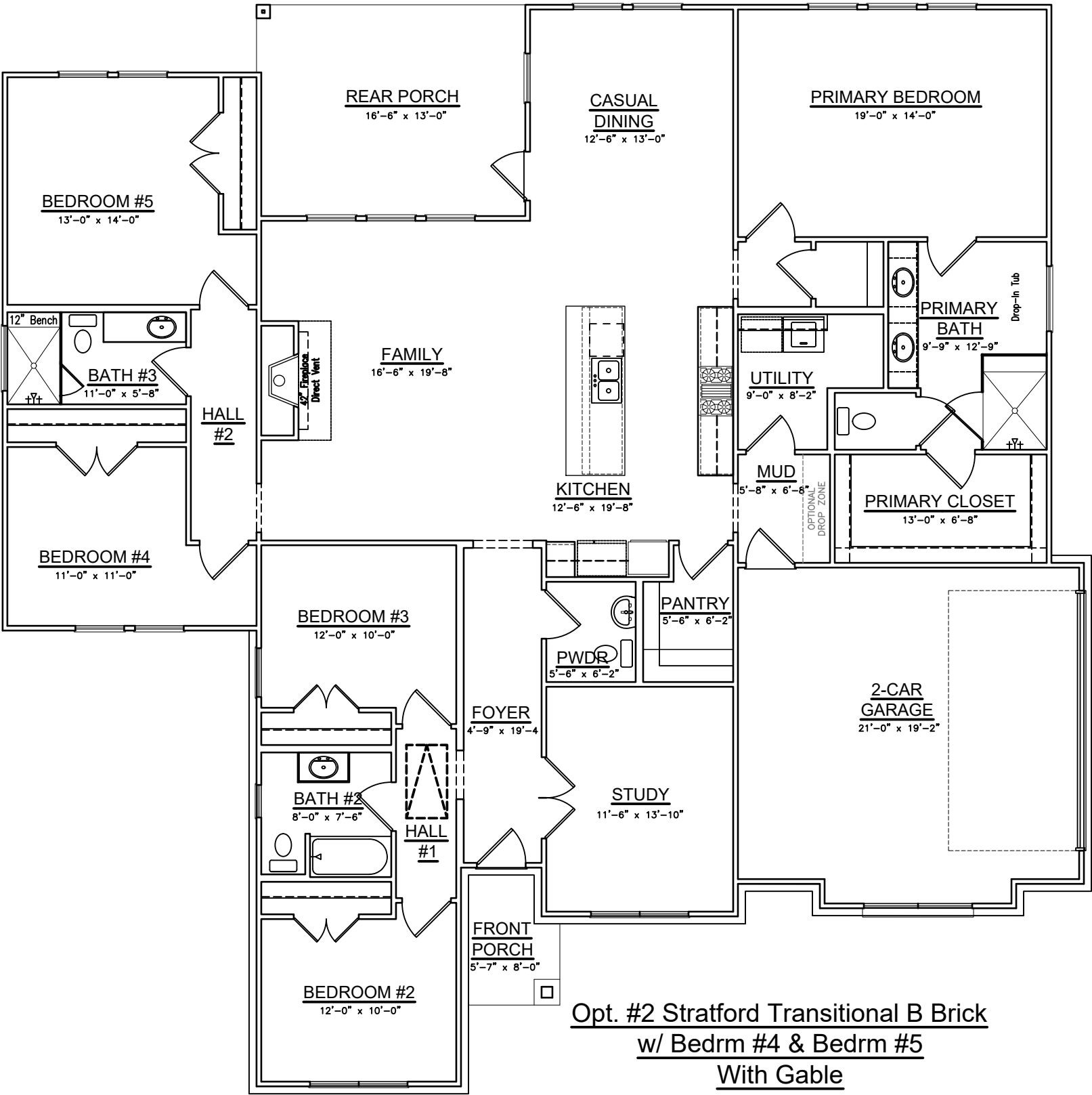
# SQUARE FOOTAGES

	SQ. FT.
TOTAL LIVING	2693
FRONT PORCH	40
REAR PORCH	215
2-CAR GARAGE	433
TOTAL NON-LIVING	696
(overage non-living)	23
<b>TOTAL FRAME</b>	<b>3381</b>
<b>TOTAL SLAB</b>	<b>3437</b>
(w/ Brick Ledge)	
Width of Home	65'-5"
Depth of Home	67'-0"



**Opt. #1 Stratford Transitional B Brick  
w/ Gameroom & Bedroom #4  
With Gable**

SQUARE FOOTAGES	
	SQ. FT.
TOTAL LIVING	2768
FRONT PORCH	40
REAR PORCH	215
2-CAR GARAGE	433
TOTAL NON-LIVING	688
(overage non-living) n/a	
TOTAL FRAME	3464
TOTAL SLAB	3521
(w/ Brick Ledge)	
Width of Home	67'-0"
Depth of Home	67'-0"



**Opt. #2 Stratford Transitional B Brick  
w/ Bedrm #4 & Bedrm #5  
With Gable**



# SQUARE FOOTAGES

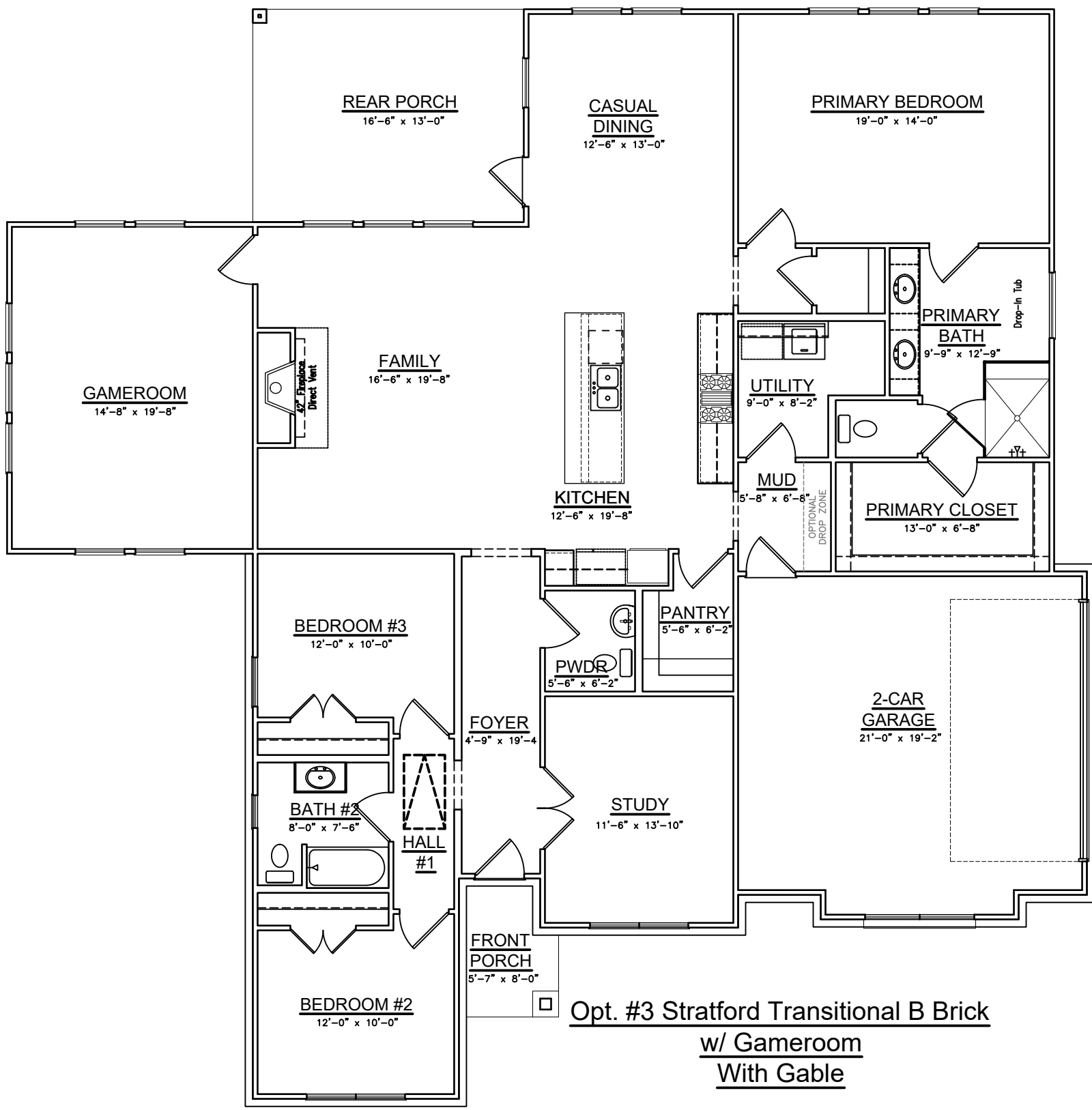
	SQ. FT.
TOTAL LIVING	2535

FRONT PORCH	40
REAR PORCH	215
2-CAR GARAGE	433
TOTAL NON-LIVING	688
(overage non-lining)	54

TOTAL FRAME	3223
-------------	------

TOTAL SLAB	3282
(w/ Brick Ledge)	

Width of Home	66'-4"
Depth of Home	67'-0"



Opt. #3 Stratford Transitional B Brick  
w/ Gameroom  
With Gable



SQUARE FOOTAGES	
	SQ. FT.
TOTAL LIVING	2167
FRONT PORCH	40
REAR PORCH	279
2-CAR GARAGE	433
TOTAL NON-LIVING	752
(overage non-lining)	210
TOTAL FRAME	2919
TOTAL SLAB	2860
(w/ Brick Ledge)	
Width of Home	51'-10"
Depth of Home	67'-0"

