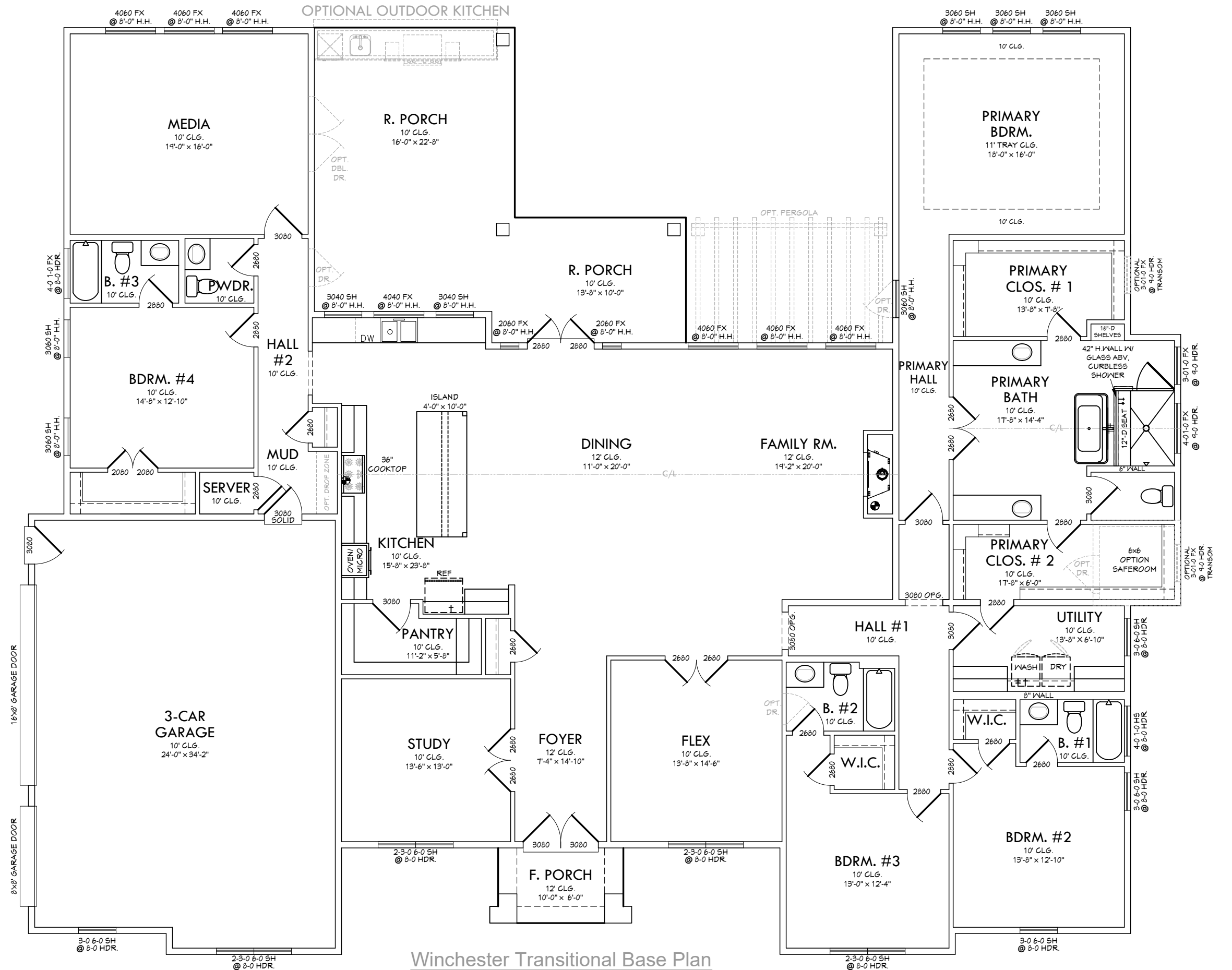


SQUARE FOOTAGES

	SQ. FT.
TOTAL LIVING	4186
FRONT PORCH	62
REAR PORCH	504
3-CAR GARAGE	837
TOTAL NON-LIVING	1403
(overage non-living)	357
TOTAL FRAME	5589
TOTAL SLAB	5589
Width of Home	92'-0"
Depth of Home	74'-0"



Winchester Transitional Base Plan

SQUARE FOOTAGES

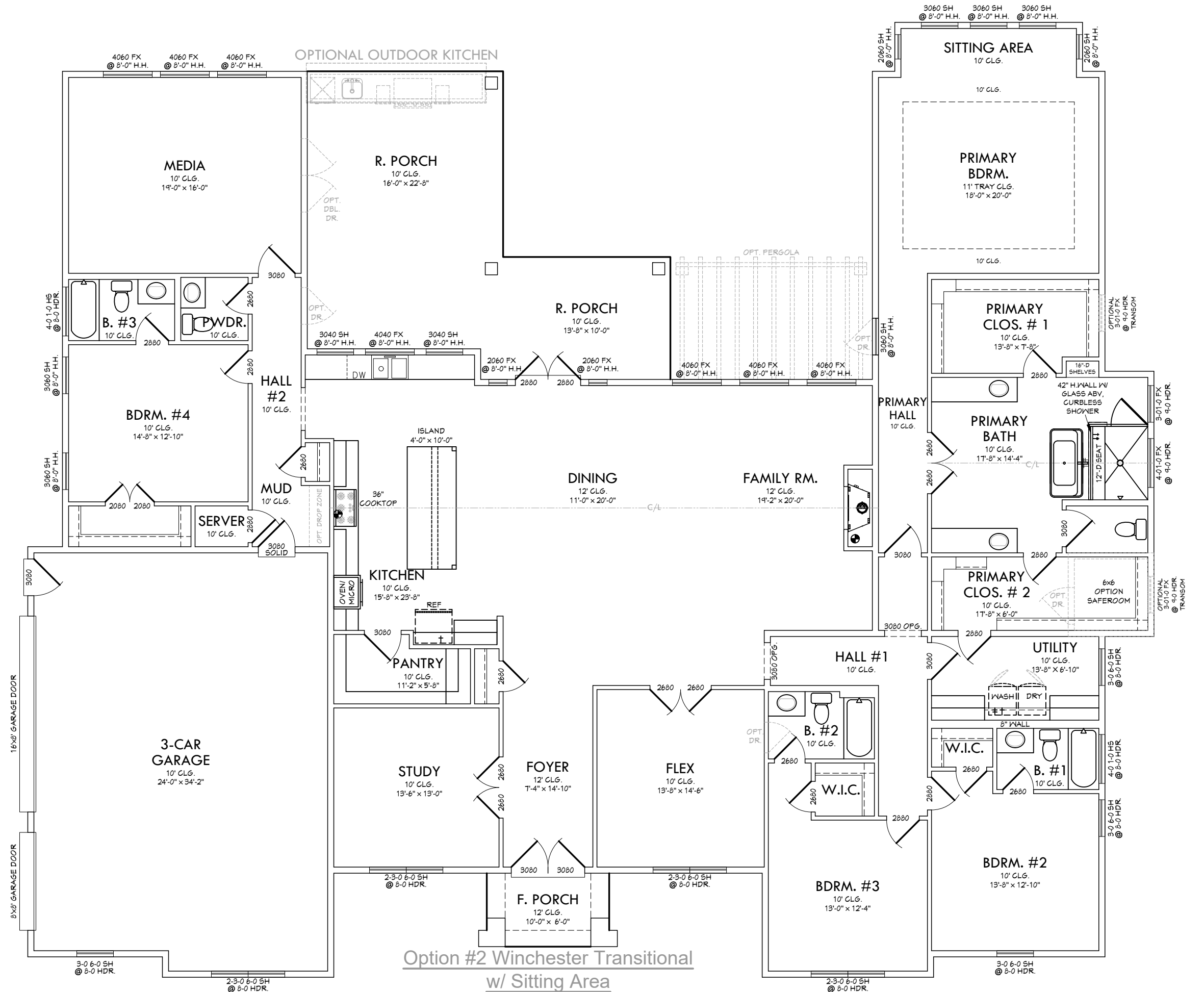
	SQ. FT.
TOTAL LIVING	4248

FRONT PORCH	62
REAR PORCH	504
3-CAR GARAGE	837
TOTAL NON-LIVING	1403
(overage non-living)	341

TOTAL FRAME	5651
-------------	------

TOTAL SLAB	5651
------------	------

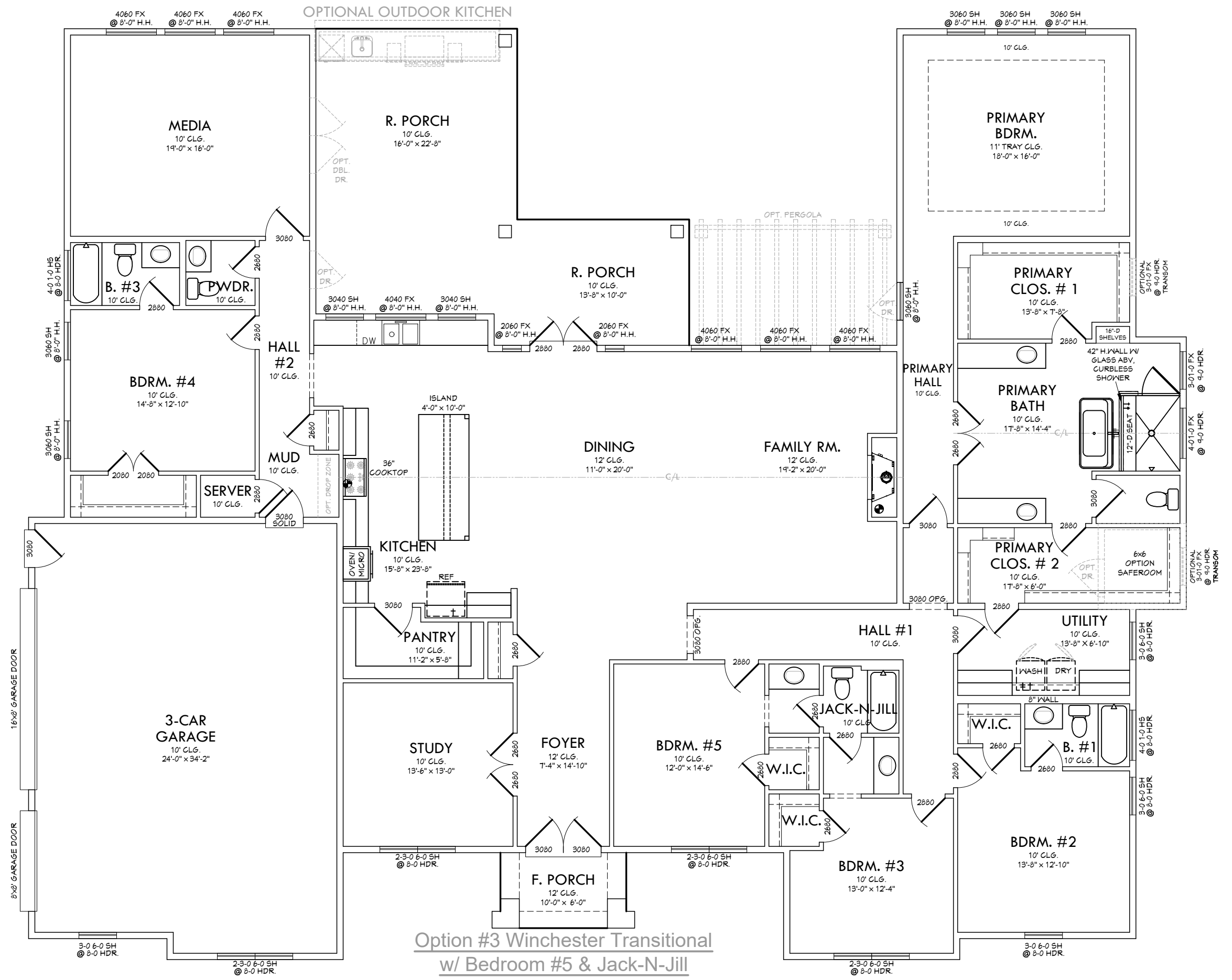
Width of Home	92'-0"
Depth of Home	78'-0"



Option #2 Winchester Transitional
w/ Sitting Area

SQUARE FOOTAGES

	SQ. FT.
TOTAL LIVING	4186
FRONT PORCH	62
REAR PORCH	504
3-CAR GARAGE	837
TOTAL NON-LIVING	1403
(overage non-living)	357
TOTAL FRAME	5589
TOTAL SLAB	5589
Width of Home	92'-0"
Depth of Home	74'-0"



Option #3 Winchester Transitional
w/ Bedroom #5 & Jack-N-Jill

SQUARE FOOTAGES

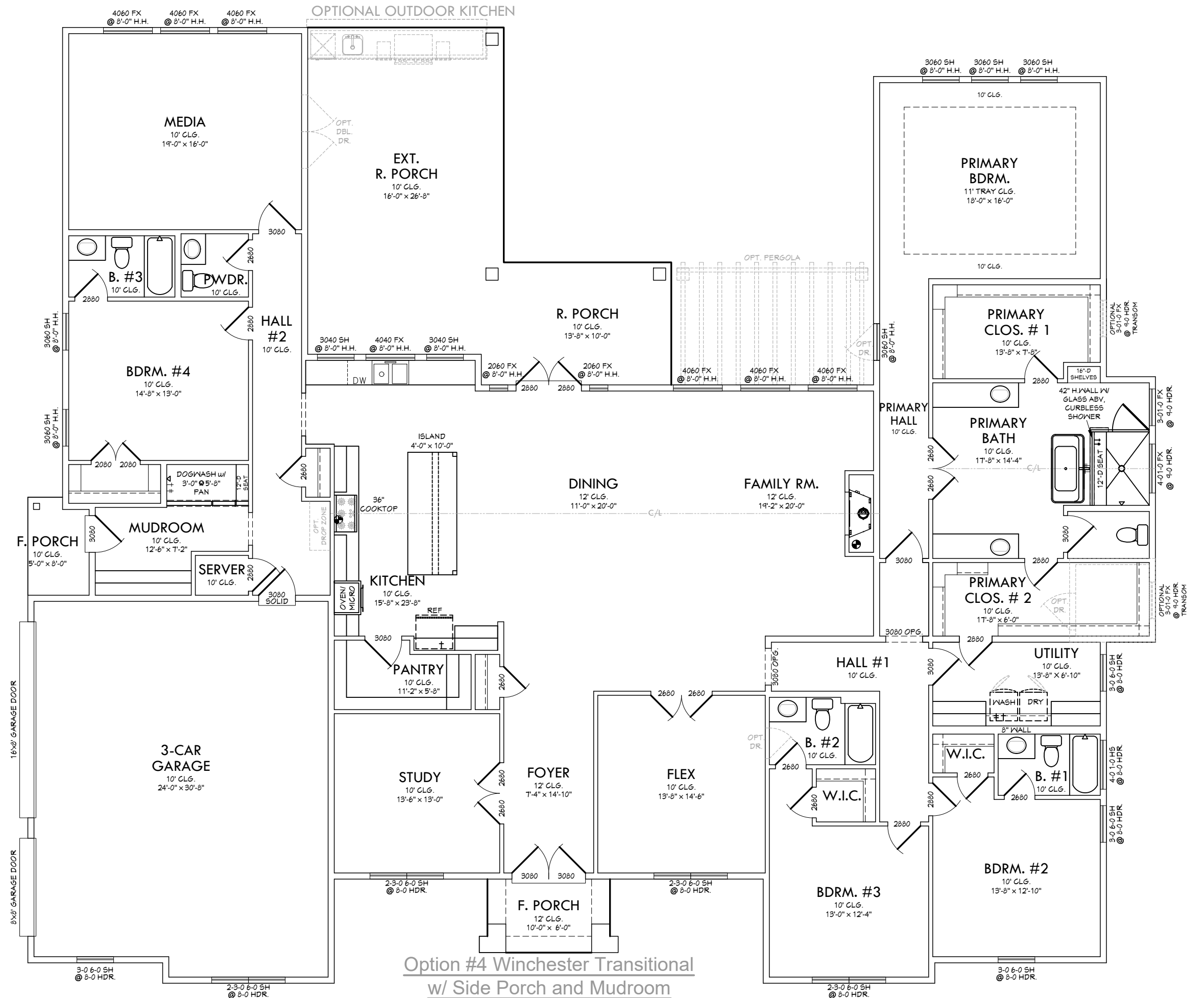
	SQ. FT.
TOTAL LIVING	4316

FRONT PORCH	62
SIDE PORCH	39
REAR PORCH	568
3-CAR GARAGE	752
TOTAL NON-LIVING	1421
(overage non-living)	342

TOTAL FRAME	5737
-------------	------

TOTAL SLAB	5737
------------	------

Width of Home	92'-0"
Depth of Home	78'-0"



Option #4 Winchester Transitional
w/ Side Porch and Mudroom

SQUARE FOOTAGES

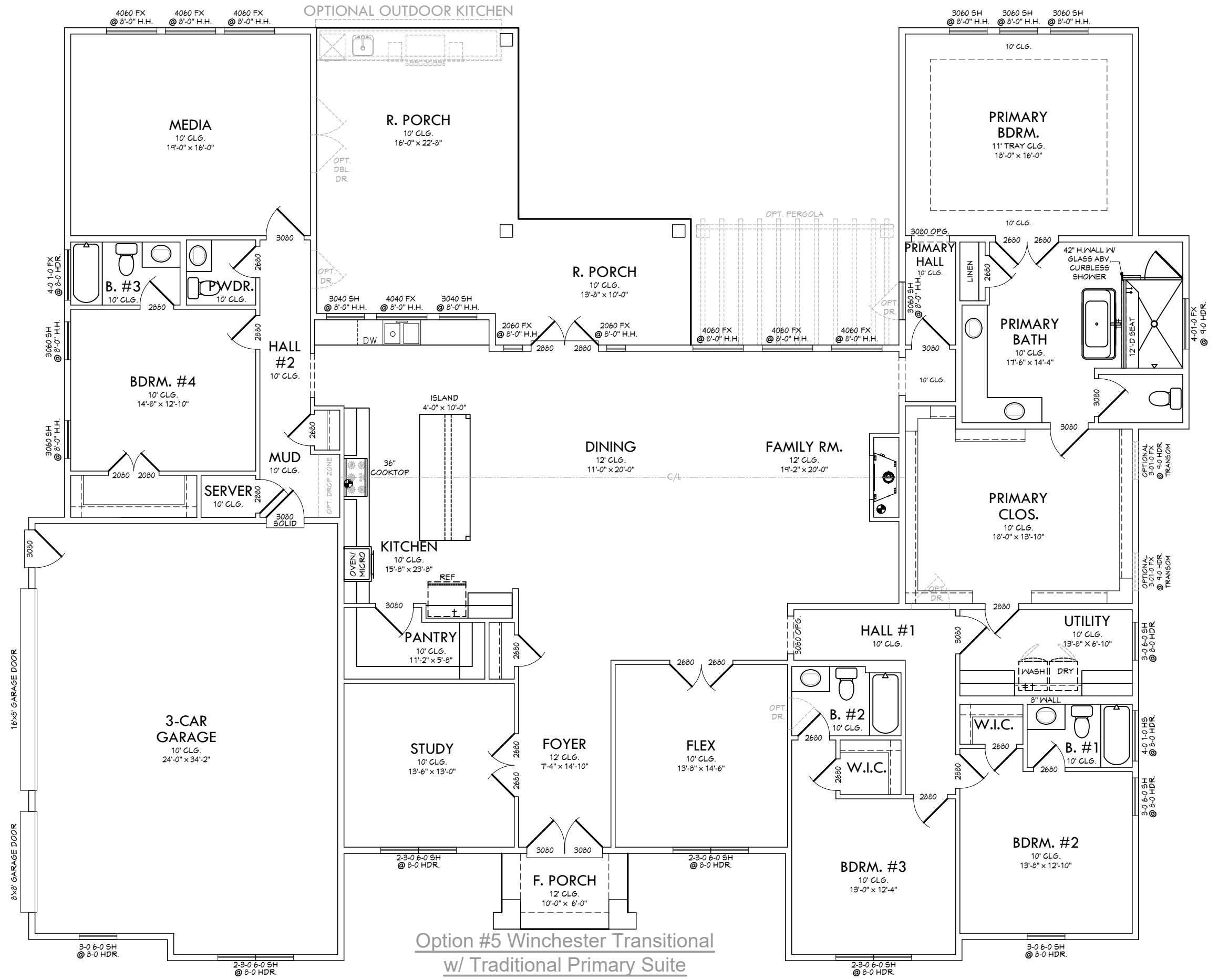
	SQ. FT.
TOTAL LIVING	4166

FRONT PORCH	62
REAR PORCH	499
3-CAR GARAGE	837
TOTAL NON-LIVING	1398
(overage non-living)	356

TOTAL FRAME	5564
-------------	------

TOTAL SLAB	5564
------------	------

Width of Home	92'-0"
Depth of Home	74'-0"



Option #5 Winchester Transitional
w/ Traditional Primary Suite

SQUARE FOOTAGES

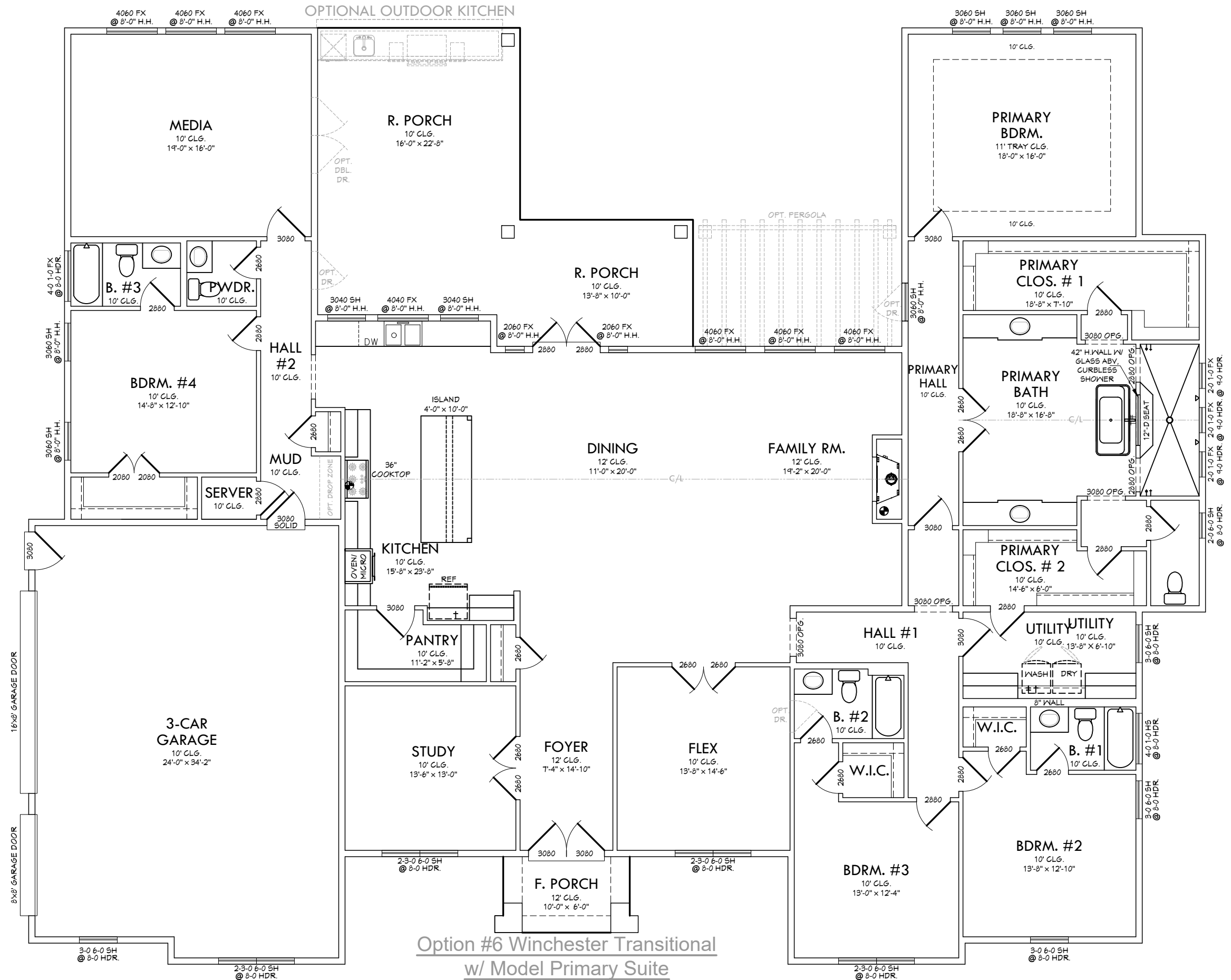
	SQ. FT.
TOTAL LIVING	4249

FRONT PORCH	62
REAR PORCH	504
3-CAR GARAGE	837
TOTAL NON-LIVING	1403
(overage non-living)	341

TOTAL FRAME	5652
-------------	------

TOTAL SLAB	5652
------------	------

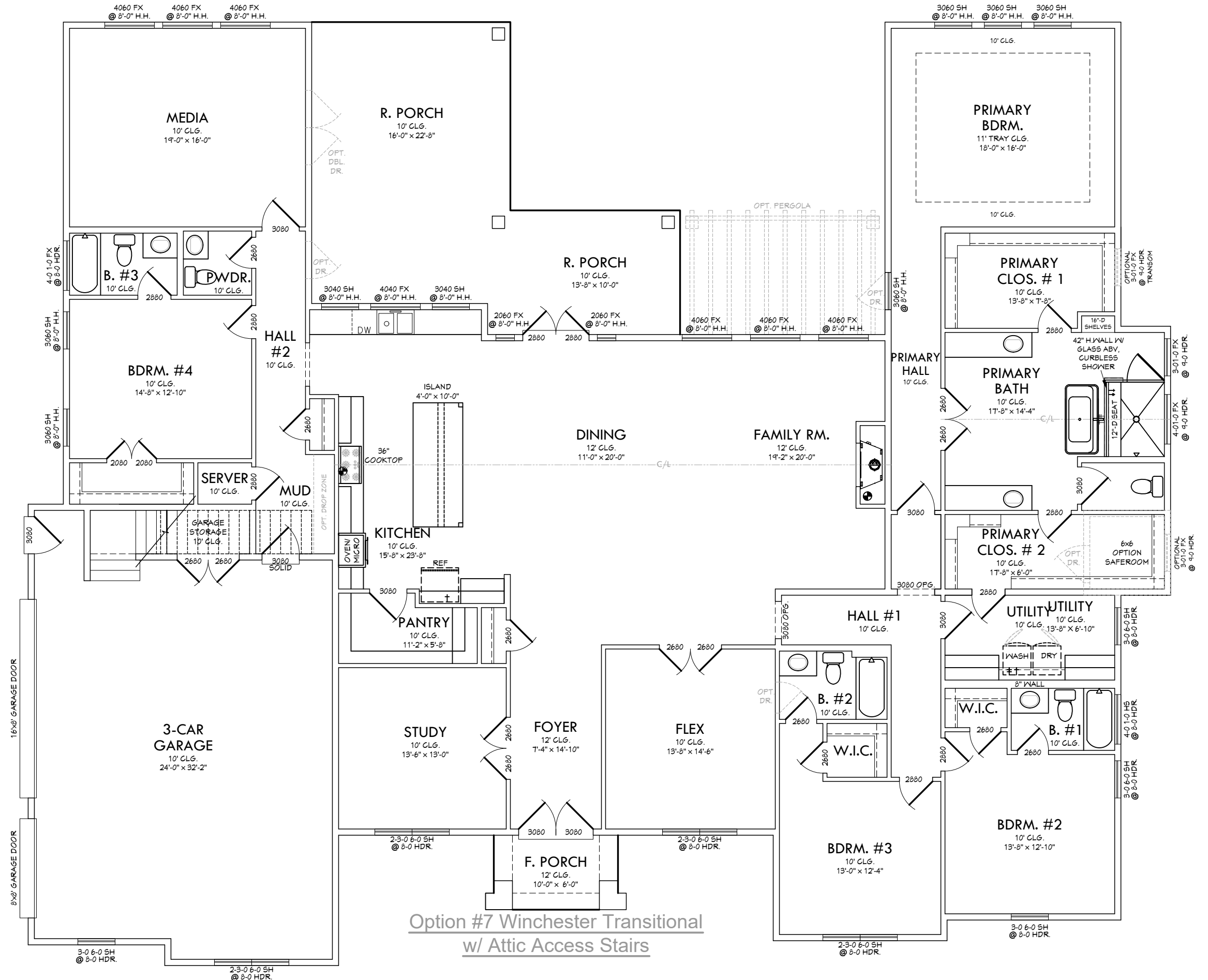
Width of Home	93'-0"
Depth of Home	74'-0"



Option #6 Winchester Transitional
w/ Model Primary Suite

SQUARE FOOTAGES

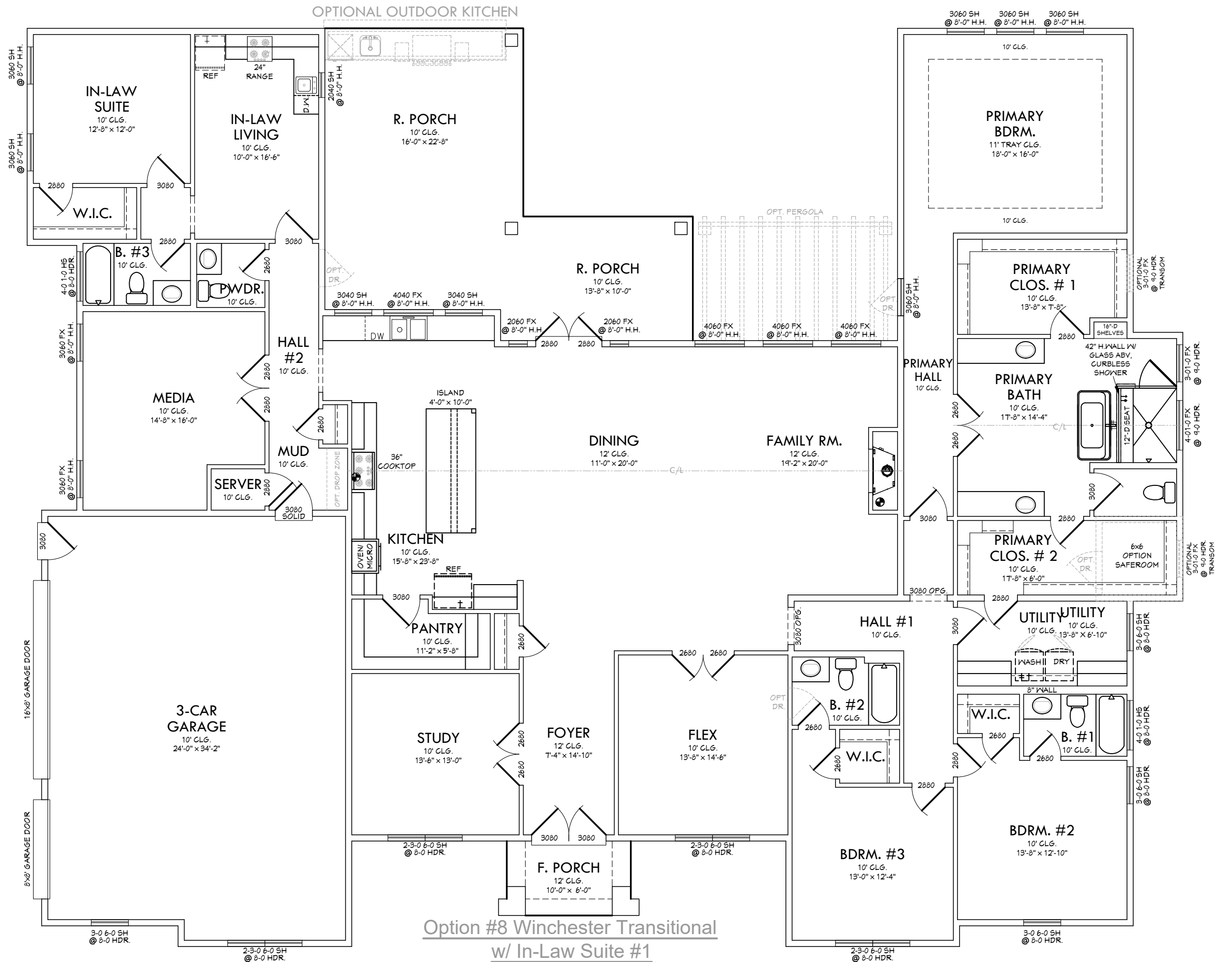
	SQ. FT.
TOTAL LIVING	4213
FRONT PORCH	62
REAR PORCH	504
3-CAR GARAGE	860
TOTAL NON-LIVING	1426
(overage non-living)	373
TOTAL FRAME	5639
TOTAL SLAB	5639
Width of Home	92'-0"
Depth of Home	76'-0"



Option #7 Winchester Transitional
w/ Attic Access Stairs

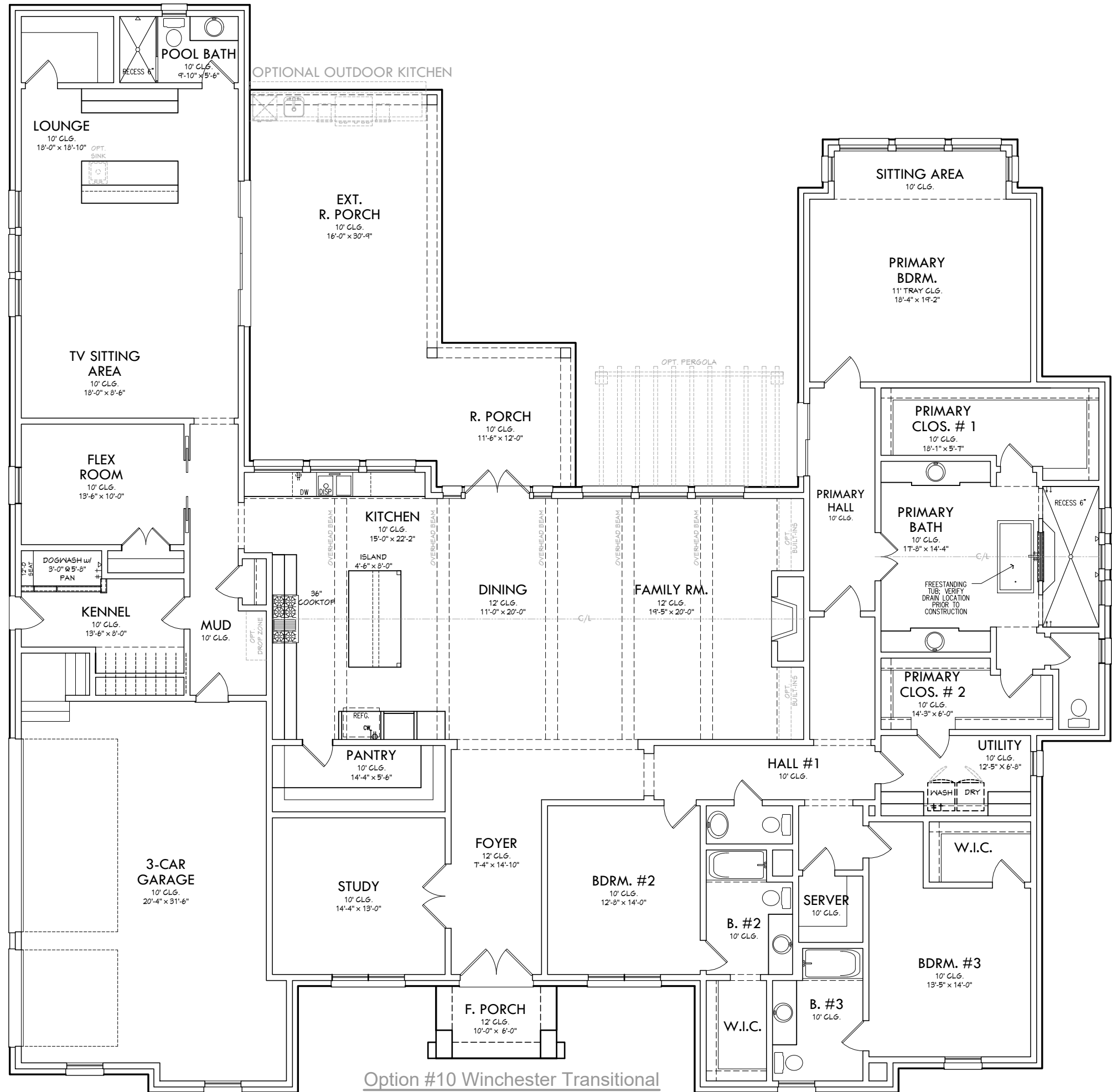
SQUARE FOOTAGES

	SQ. FT.
TOTAL LIVING	4256
FRONT PORCH	62
REAR PORCH	504
3-CAR GARAGE	837
TOTAL NON-LIVING	1403
(overage non-living)	339
TOTAL FRAME	5659
TOTAL SLAB	5659
Width of Home	93'-2"
Depth of Home	74'-0"



Option #8 Winchester Transitional
w/ In-Law Suite #1

SQUARE FOOTAGES	
	SQ. FT.
TOTAL LIVING	4633
FRONT PORCH	62
REAR PORCH	625
3-CAR GARAGE	709
TOTAL NON-LIVING	1396
(average non-living)	238
TOTAL FRAME	6029
TOTAL SLAB	6229
W/ BRICK LEDGE	
Width of Home	91'-4"
Depth of Home	90'-3"



Option #10 Winchester Transitional
The RGR Model