

SQUARE FOOTAGES

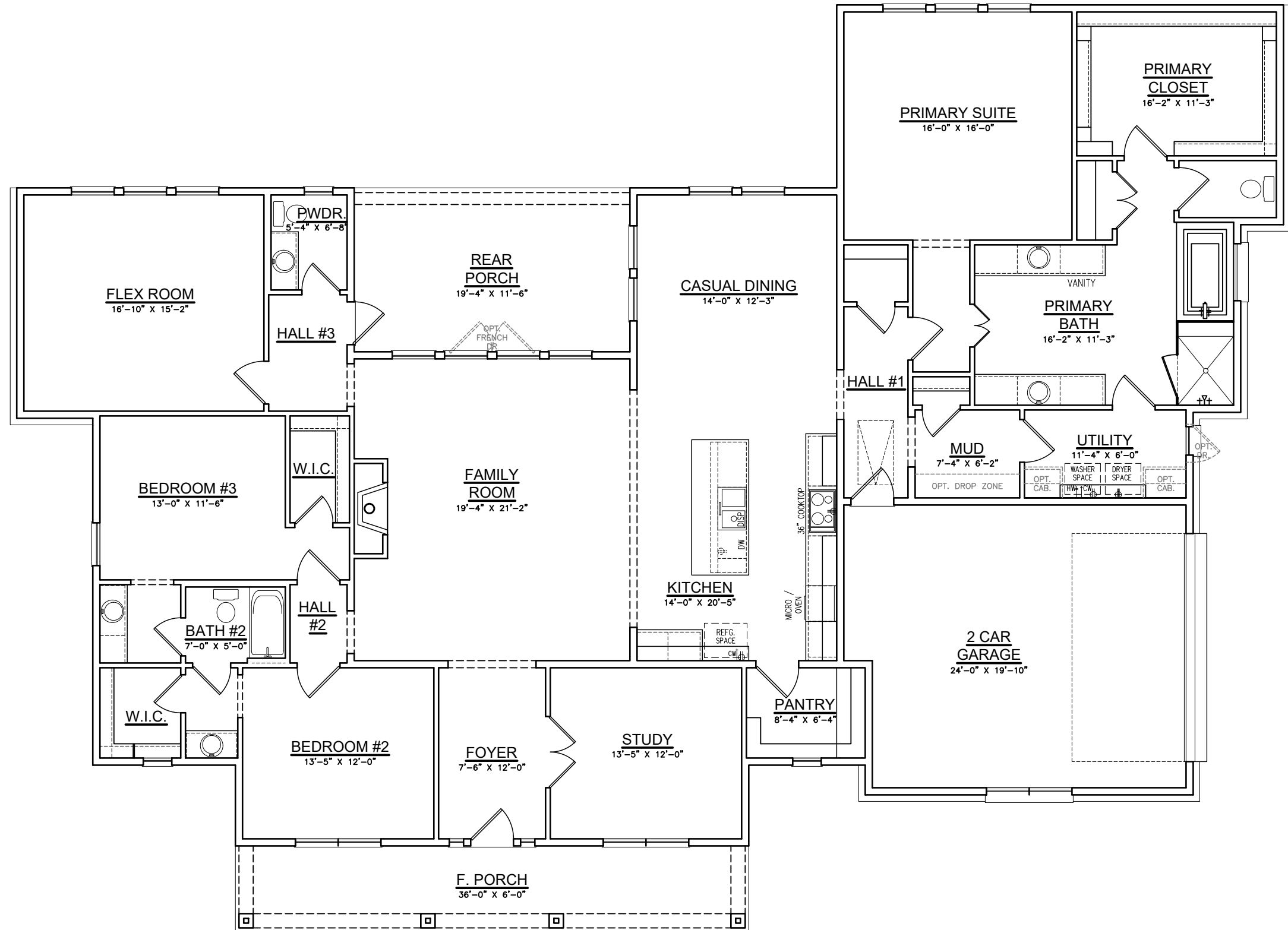
	SQ. FT.
TOTAL LIVING	3223

FRONT PORCH	216
REAR PORCH	222
2 CAR GARAGE	480
TOTAL NON-LIVING	918
(overage non-living)	112

TOTAL FRAME	4141
-------------	------

TOTAL SLAB	4191
W/BRICK LEDGE	

Width of Home	89'-9"
Depth of Home	65'-0"



Abbott Modern Acadian Base Plan

SQUARE FOOTAGES

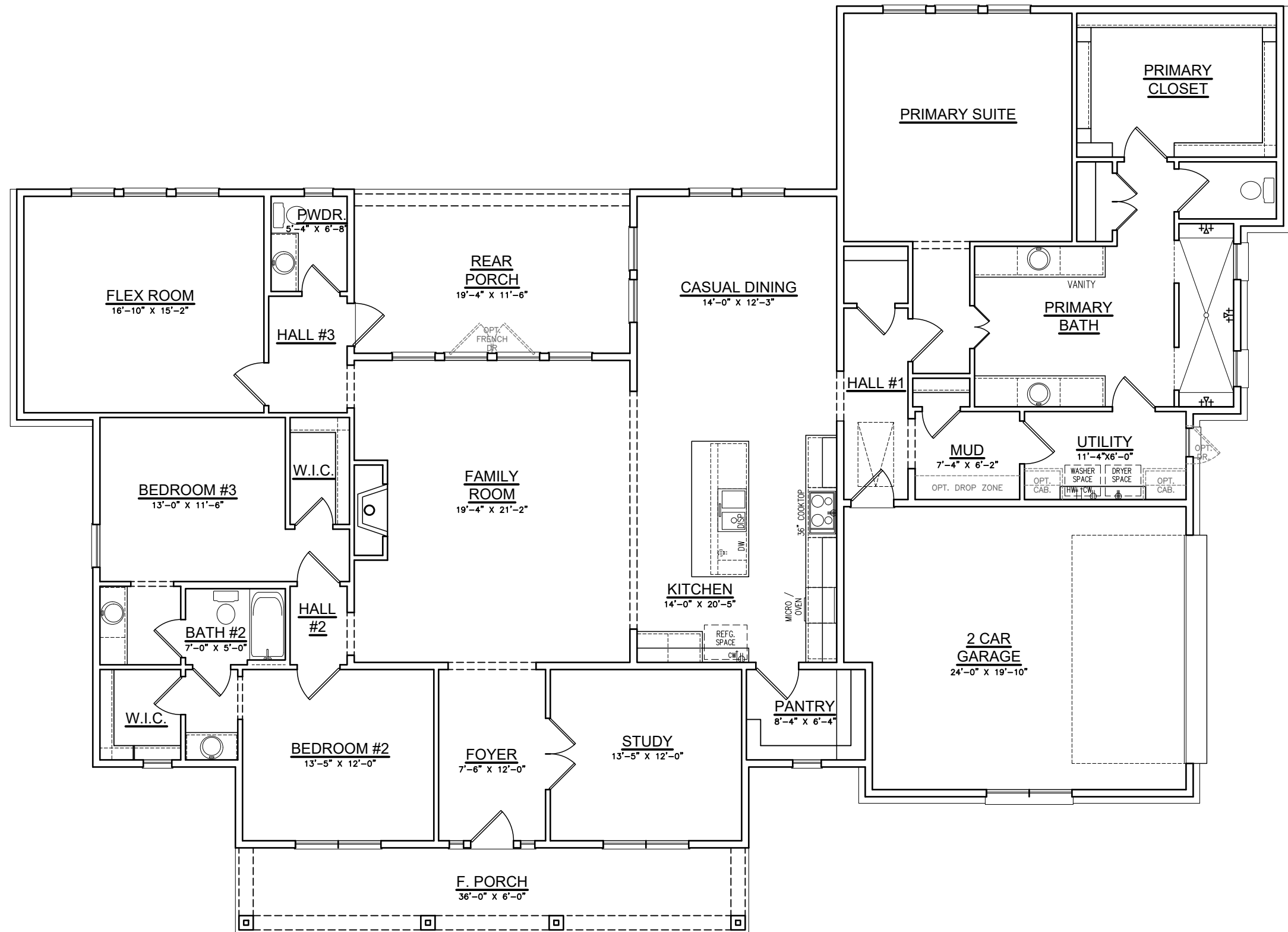
	SQ. FT.
TOTAL LIVING	3223

FRONT PORCH	216
REAR PORCH	222
2 CAR GARAGE	480
TOTAL NON-LIVING	918
(overage non-living)	112

TOTAL FRAME	4141
-------------	------

TOTAL SLAB	4191
W/BRICK LEDGE	

Width of Home	89'-9"
Depth of Home	65'-0"



Option #1 Abbott Modern Acadian with Primary Suite Opt. No Primary Bath Tub

SQUARE FOOTAGES

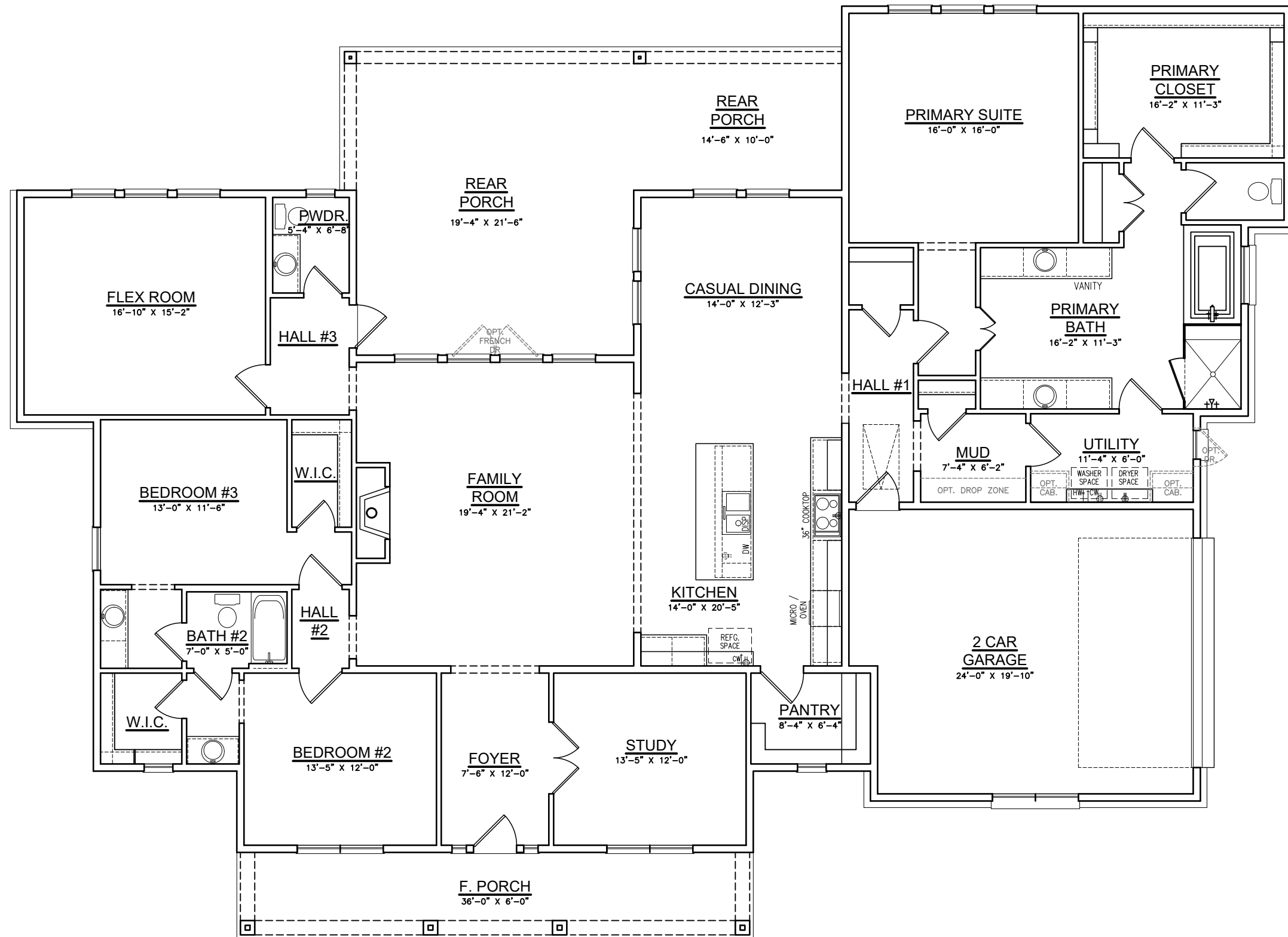
	SQ. FT.
TOTAL LIVING	3223

FRONT PORCH	216
REAR PORCH	572
2 CAR GARAGE	480
TOTAL NON-LIVING	1268
(overage non-living)	462

TOTAL FRAME	4491
-------------	------

TOTAL SLAB	4541
W/BRICK LEDGE	

Width of Home	89'-9"
Depth of Home	65'-0"



Option #2 Abbott Modern Acadian with
Extended R. Porch

SQUARE FOOTAGES

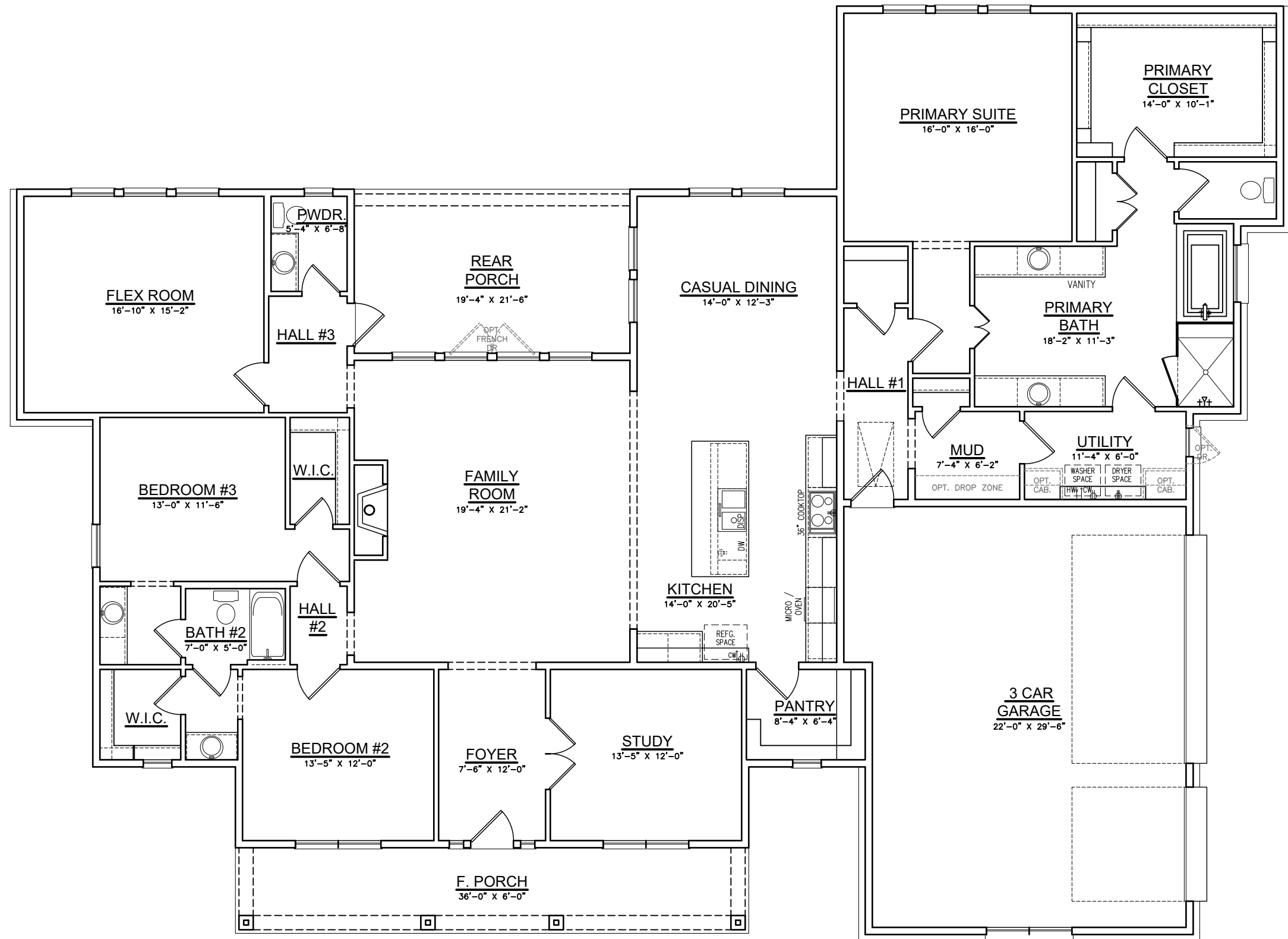
	SQ. FT.
TOTAL LIVING	3223

FRONT PORCH	216
REAR PORCH	222
3-CAR GARAGE	703
TOTAL NON-LIVING	1141
(overage non-living)	335

TOTAL FRAME	4364
-------------	------

TOTAL SLAB	4423
W/BRICK LEDGE	

Width of Home	89'-9"
Depth of Home	65'-0"



Option #3 Abbott Modern Acadian with
Garage Opt. 3-Car Garage

SQUARE FOOTAGES

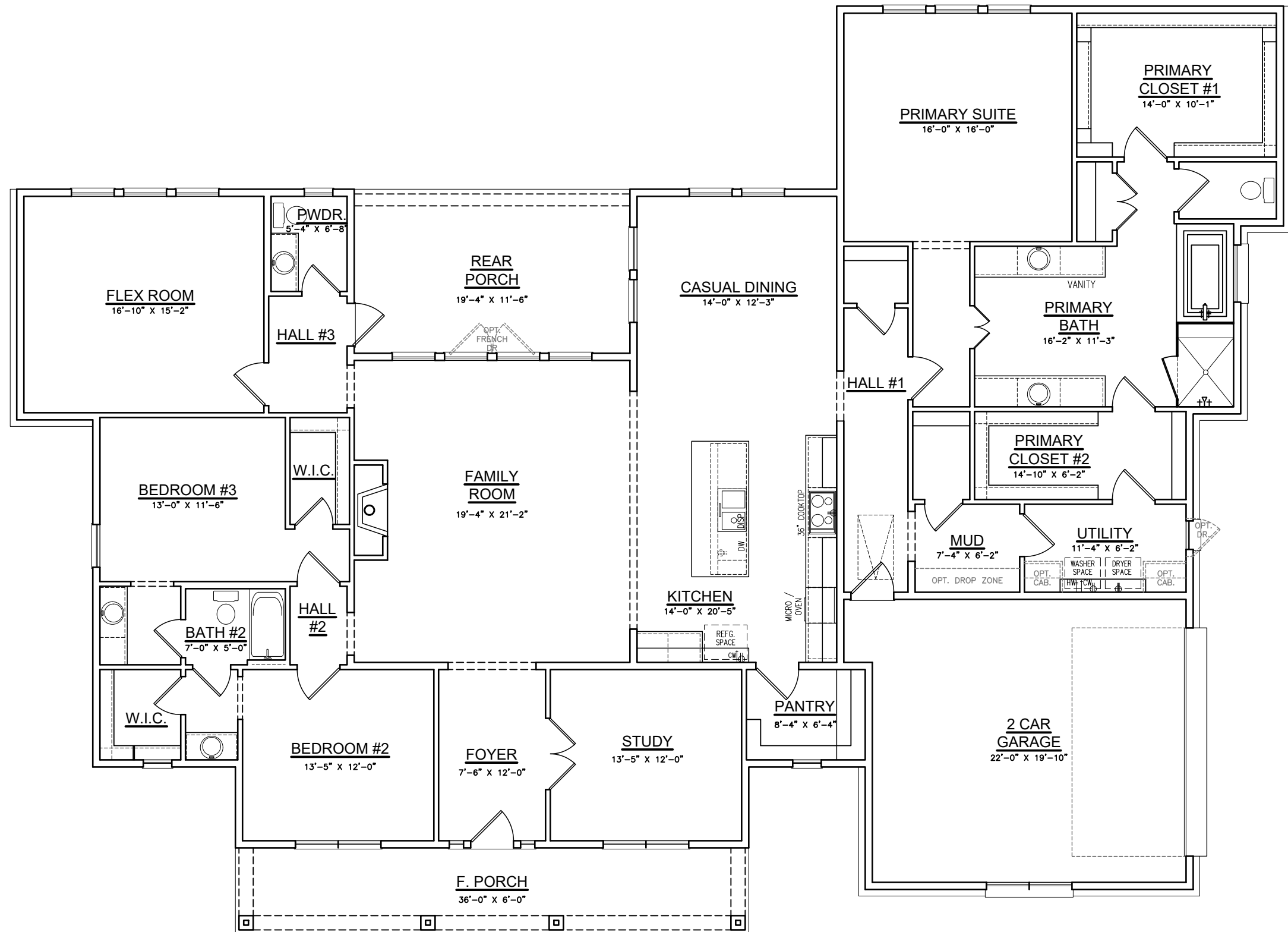
	SQ. FT.
TOTAL LIVING	3382

FRONT PORCH	216
REAR PORCH	222
2-CAR GARAGE	471
TOTAL NON-LIVING	909
(overage non-living)	64

TOTAL FRAME	4291
-------------	------

TOTAL SLAB	4347
W/BRICK LEDGE	

Width of Home	89'-9"
Depth of Home	65'-0"



Option #4 Abbott Modern Acadian with Primary Suite Opt. Two Primary Closets



SQUARE FOOTAGES

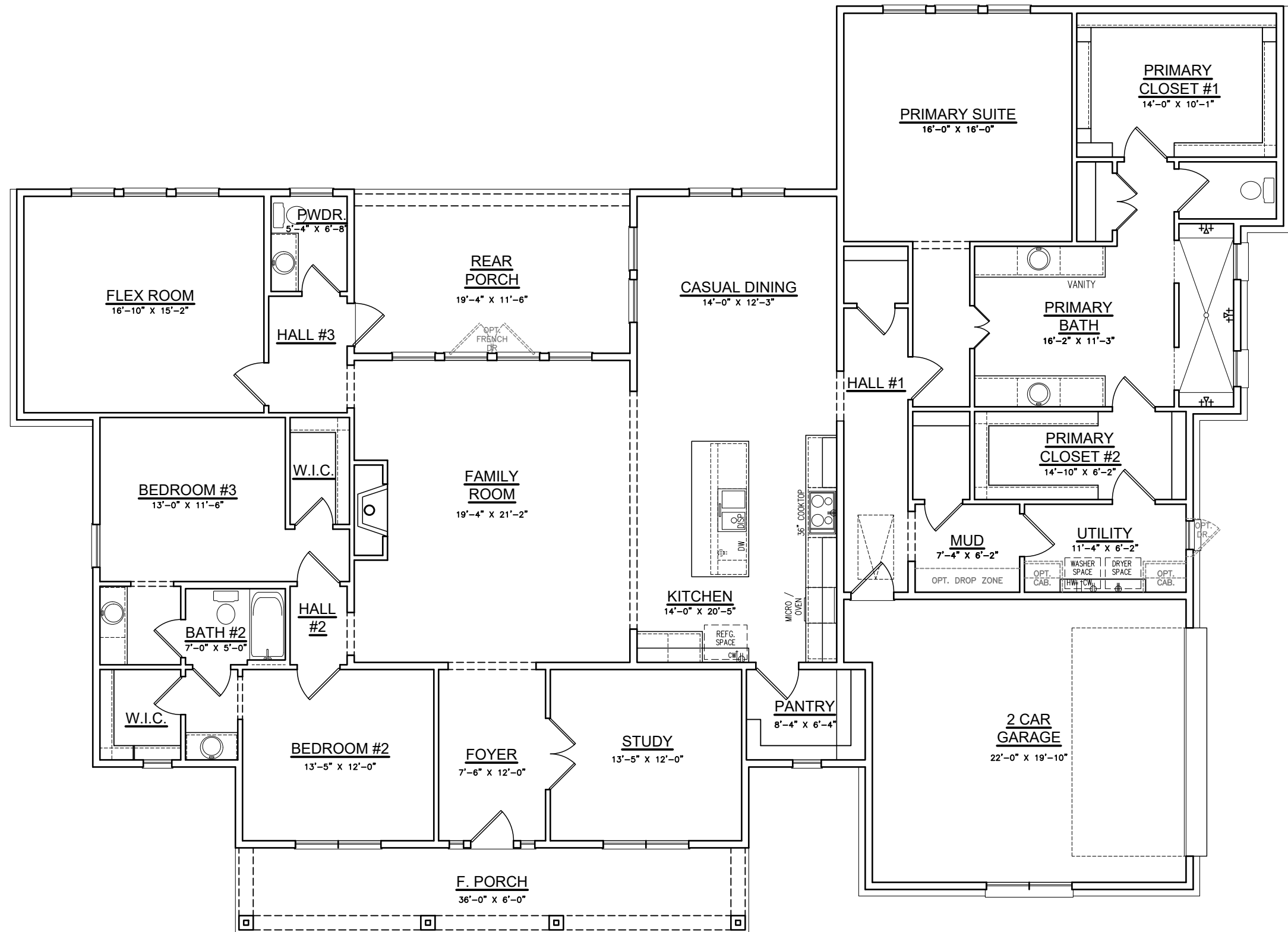
	SQ. FT.
TOTAL LIVING	3382

FRONT PORCH	216
REAR PORCH	222
2-CAR GARAGE	471
TOTAL NON-LIVING	909
(overage non-living)	64

TOTAL FRAME	4291
-------------	------

TOTAL SLAB	4347
W/BRICK LEDGE	

Width of Home	89'-9"
Depth of Home	65'-0"



Option #5 Abbott Modern Acadian with
Primary Suite Opt. Two Primary Closets
W/ No Primary Bath Tub



SQUARE FOOTAGES

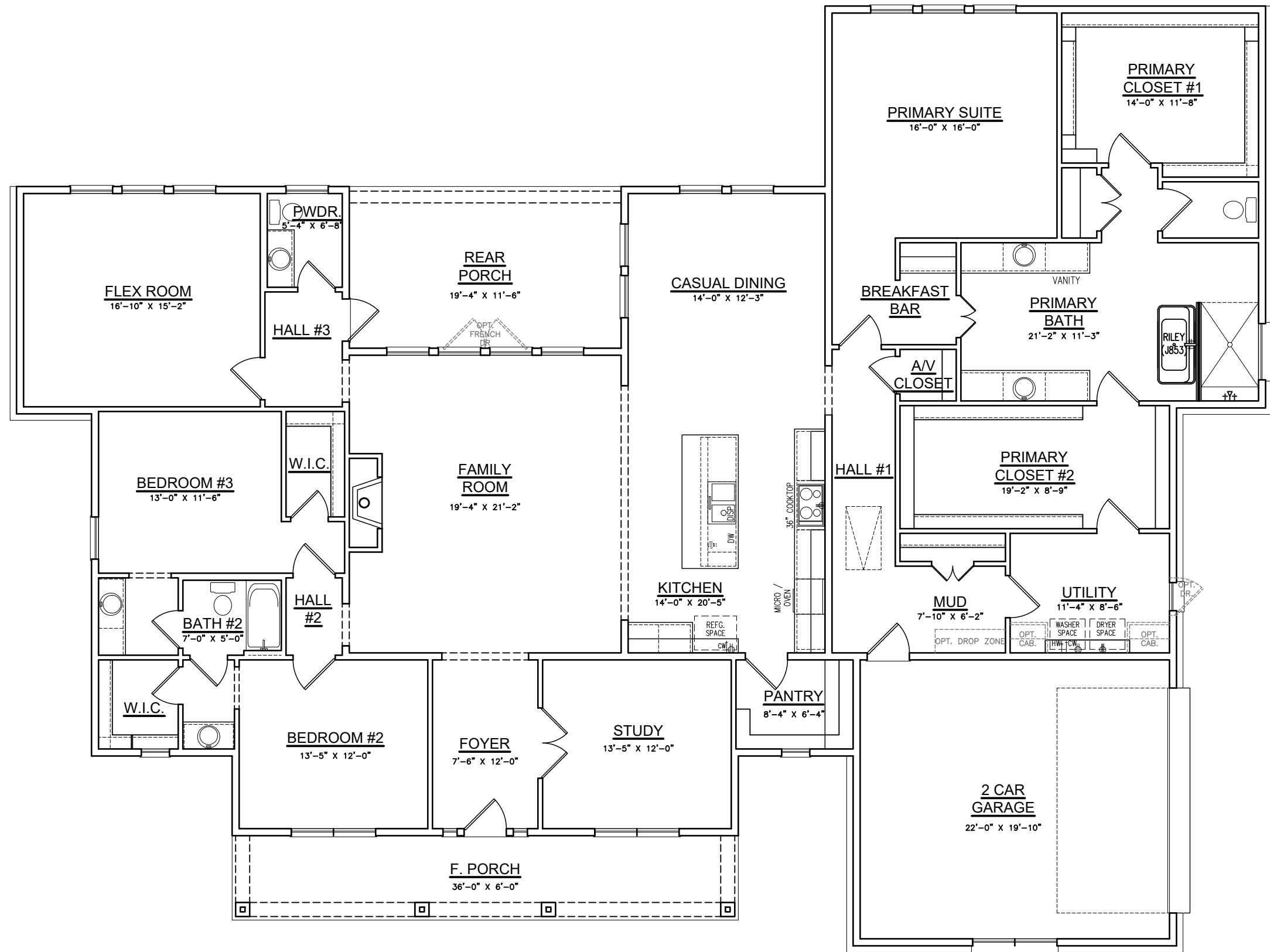
	SQ. FT.
TOTAL LIVING	3541

FRONT PORCH	216
REAR PORCH	222
2-CAR GARAGE	464
TOTAL NON-LIVING	902
(overage non-living)	17

TOTAL FRAME	4443
-------------	------

TOTAL SLAB	4504
W/BRICK LEDGE	

Width of Home	89'-9"
Depth of Home	67'-3"



Option #6 Abbott Modern Acadian with
Primary Suite Opt. Larger Primary Suite

SQUARE FOOTAGES

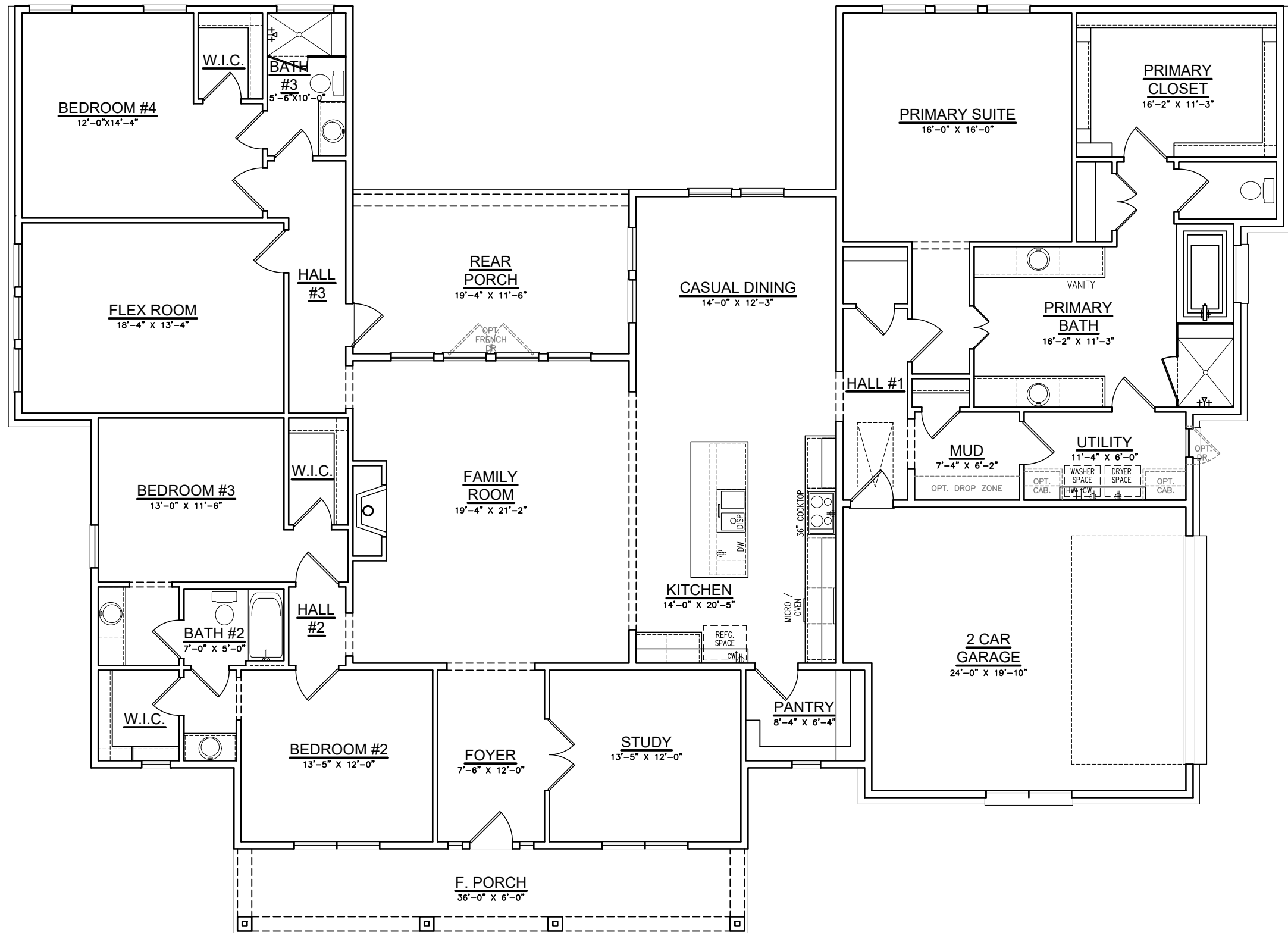
	SQ. FT.
TOTAL LIVING	3527

FRONT PORCH	216
REAR PORCH	222
2 CAR GARAGE	480
TOTAL NON-LIVING	918
(overage non-living)	36

TOTAL FRAME	4445
-------------	------

TOTAL SLAB	4501
W/BRICK LEDGE	

Width of Home	89'-9"
Depth of Home	65'-0"



Option #7 Abbott Modern Acadian
with 4th Bedroom